

European 16 Living Cities



Brief Wernigerode

Launch Day

Monday, 5th of April 2021

Organiser

Europan – German Association for the Promotion of Architecture, Housing and Urban Planning in cooperation with the City of Wernigerode and the Gebäude- und Wohnungsbau-gesellschaft Wernigerode mbH

Contact

Europan Deutschland
Vesta Nele Zareh, Lola Meyer
Friedrichstraße 23A
10969 Berlin
Germany
Telefon +49 30 399 185 49
Fax +49 30 399 185 50
Email mail@europan.de

Dipl.Ing. / Architekt
Christian Zeigermann
CEO

Gebäude- und
Wohnungsbaugesellschaft
Wernigerode mbH
Platz des Friedens 6
38855 Wernigerode
Phone +49 3943-21002
Email: christian.zeigermann@gww-wr.de
www.gww-wr.de

Site Representative

Christian Zeigermann, CEO

Actors Involved

City of Wernigerode and the housing association „Gebäude- und Wohnungsbaugesellschaft Wernigerode mbH“

Team Representative

Architect, landscape architect

Communication

Communication after the competition

Jury – 1st Evaluation

with the participation of the site representatives

Jury – Prize Selection

Ranked selection: with Winner (12.000 Euro), Runner-up (6.000 Euro) and Special Mention (no reward). The jury is autonomous in its decision.

Post Competition Intermediate Procedure

Dependent on the qualification a further assignment is intended.

Mission Given to the Selected Team/s for the Implementation

Planned realisation of the two residential buildings 2023/24

Schedule

2021

April 5	Official launch of the European 16 Competition
May 7	German launching event
May 27	Site visit and colloquium
June 18	Closing date for further requests on the sites
July 2	Responding to requests on the sites
Sept. 17	Registration deadline
Sept. 17	Submission of entries
Nov. 5	Preliminary selection by the local jury
November	Forum of cities and juries
Nov. 26	Final selection by the national jury
Dec. 20	International publication of results
Dec./Jan.	German award ceremony

2022

Feb. till June	Time frame for workshops
November	Inter-Sessions-Forum European 16/17

National Jury

Client Representatives

- Dr. Timo Munzinger, German Association of Cities and Towns
- Prof. Dr. Iris Reuther, Senate Building Director of the Free Hanseatic City of Bremen
- Karin Sandeck, Board European Germany, Bavarian State Ministry of Housing, Building and Transport, Munich

Architects / Planners

- Stéphanie Bru, BRUTER
- Julia Dahlhaus, DMSW
- Prof. Dr. Agnes Förster, Chair for Planning Theory and Urban Development, RWTH Aachen
- Prof. Dipl. Ing. Arch. Kyung-Ae Kim-Nalleweg, Kim Nalleweg Architekten
- Anna Popelka, PPAG architects

Public Figure

- Kaye Geipel, Vice President European Germany, deputy editor-in-chief BAUWELT

Substitutes

- Dr. Saskia Hebert, Vice President European Germany, subsolar* architektur & stadtforschung
- Prof Dr. Thorsten Erl, Board European Germany, metris architects and urban planners, professor for Urban Planning Siegen/Heidelberg

The local juries will be presented on the European website in due time.

Table of Contents

Part 1 General Conditions

	General Information	1
	Schedule	2
1	Acceptance of the Rules of European 16	6
2	Organiser	6
3	Type of Competition	6
4	Admission Zone	7
5	Entry Conditions	7
6	Registration	8
7	Information Available to Teams	8
8	FAQ	10
9	Submission of Entries	10
10	Results and Prizes	12
11	Communication of the Competition	13
12	Rights and Obligations	13
13	List of European 16 Competitions	14
14	Inter-Sessions Forum	14
15	Organization of the Juries	14
16	Juries	14
17	Implementations	16

Part 2 Competition Task

1	Conditions and Goal	20
2	Reference to the Theme of European 16	20
3	The City of Wernigerode	23
4	Study Site	23
4.1	Competition Site	24
4.1.1	Project Site 1 – Veckenstedter Weg (Zaunwiese)	24
4.1.1.2	Project Site 1 – Green Areas and Open Spaces	24
4.1.1.3	Project Site 1 – Access	24
4.1.1.4	Project Site 1 – Contaminated Areas, Technical Requirements, Framework Conditions	24
4.1.2	Project Site 2 (Veckenstedter Weg/ Gießerweg)	24
4.1.2.1	Project Site 2 – Green Areas and Open Spaces	27
4.1.2.2	Project Site 2 – Access	27
4.1.2.3	Project Site 2 – Contaminated Areas, Technical Requirements, Framework Conditions	27
5	Statement of Task	27
	Image Credits	34

Part 1



General Conditions



1 Acceptance of the Rules of European 16

The competition is implemented in conformity with the rules passed by the European European federation. The complete rules will be published under www.european-europe.eu on the European website.

The competition is held in accordance with the the Guidelines for Planning Competitions (RPW 2013) in the version published by the Federal Ministry for the Environment, Nature Conservation, Building and Nuclear Safety (BMUB) on 31.1.20013 (Federal Gazette of 22.2.2013).

The organisers, competitors and anyone associated with the competition recognise the content of this launching text as binding. At the same time the competitors recognise the basic requirements, demands and general conditions of the European 16 competition.

2 Organiser

European, German Association for the Promotion of Architecture, Housing and Urban Planning in cooperation with the city of Werningerode

3 Type of Competition

3.1 Object of Competition ...

The City of Werningerode, with support from the GWW (Gebäude- und Wohnungsbaugesellschaft Wernigerode mbH), is developing an inner-city area with new housing typologies while urgently seeking innovative solutions to enhance the neighbourhood as a whole. Specifically, two plots of land (Project site 1 and Project site 2) are to be developed (as soon as possible) with a total of 60 residential units.

The study site – the region around Veckenstedter Weg – is a mixed area with heterogeneous uses in the immediate vicinity of the city centre. This area was originally developed in the 1930s with inspiration from the garden city movement and is situated between inner-city lakes and an allotment garden.

The goal of the process is to develop a forward-looking, sustainable framework plan for the greater study site that will ultimately create a mixed (residential) neighbourhood. In line with the European 16 motto 'Living Cities – Lebendige Städte', there is to be a mix of residential and work uses. The street-level zones and street spaces encouraging people to linger will play a special role. The framework plan must be able to be developed in sensible construction phases and include considerations on the use of open spaces (green concept: network of paths, small public squares, green areas and links to urban structure).

As prelude, Project sites 1 and 2 will be developed will be developed as part of an initial phase. Both sites should be considered in light of a sustainable and integrative housing complex that will also take open spaces into account.

From an urban development perspective, both buildings function as a prelude for the new neighbourhood; Project site 1 shoulders an additional role as an entrance to the city. The intention is to create a contemporary mix of various types of housing while enabling intergenerational cohabitation – including communal areas – and creating living space for all income levels and walks of life.

3.2 Procedure of competition

The competition is designed as an open, one-stage call for ideas. It is anonymous.

4 Admission Zone

The competition is open to all the countries in Europe.

5 Entry Conditions

5.1 Entrants

European 16 is open to any team consisting of at least one graduated architect, who may be in association with one or more professionals of the same or related disciplines within the architectural, urban and landscape field (such as architects, urban planners, landscape architects, engineers, artists) or from other relevant fields (such as sociology, geography, biology) and may further be associated with one or more students with a bachelor degree or equivalent (3 years of study) in architecture or related disciplines. The team may also have one or more contributors, who are not considered authors of the project. Every team member must be under the age of 40 years old on the closing date for submission of projects.

5.2 Composition of the Teams

There is no limit to the number of participants per team. Multidisciplinary teams are strongly recommended with regards to the sites issues.

A registered team can modify its composition on the European website until the closing date for submissions (17 September 2021). No further change shall be accepted after this date.

Each team member (associate and contributor) shall be registered as such on the European website before the closing date for submissions.

One team can submit a project on different sites in different countries with participation limited to one site in the same country and

one person can be part of different teams provided that the projects are not submitted in the same country.

Associates

Associates are considered to be authors of the project and are credited as such in all national and European publications and exhibitions. Architects must have graduated with a degree from a university specified within the EU Directive 2005/36/EC, or with an equivalent degree from a university within the natural borders of Europe, recognized by the professional architects' organizations in the country of the competition site. Other professionals must have an applicable European university degree, regardless of nationality. The compulsory requirement is to hold such a degree.

Membership in a European professional body is optional, except for associates without a European degree.

Students accepted as associates must have a bachelor degree or equivalent (3 years of study) in architecture or related disciplines from a university as mentioned above. Contributors

Teams may include additional members, called contributors. Contributors may be qualified or not but none of them shall be considered as an author of the project. Just like the associates, the contributors must be under the age of 40 years old on the closing date for submission of entries.

Team Representative

Each team names one Team Representative among the associates. The Team Representative is the sole contact with the national and European secretariats during the whole competition. Furthermore, every communication shall be done with one email address, which shall remain the same during the whole competition.

The Team Representative must be an architect or must have the architect status under the laws of a European country.

In specific cases and when mentioned on the site definition (see Synthetic Site File), the Team Representative can be an architecture, urban or landscape professional (architect, landscaper, urban planner, architect-engineer). In this case the team shall necessarily include at least one architect among the associates.

5.3 Non-Eligibility

No competition organizer and/or member of their families are eligible to take part in the competition on a site where he/ she is involved. Still, he/she can participate on another site in which he/she is not involved.

Are considered as organizers: members of the European structures and their employees; employees and contractors working for partners with sites proposed in the current session, members of technical committees, jury members and their employees.

6 Registration

Registration is done through the European website (www.european-europe.eu) and implies the acceptance of the competition rules.

In compliance with French Act #78-17 of Jan. 6th, 1978, on Information Technology, Data Files and Civil Liberties the protection of personal data communicated during registration is guaranteed. With the General Data Protection Regulation (GDPR) introduced in May, 25th, 2018, you hold the right to access and modify the information regarding your participation, as well as the right to limit, transfer personal files and eliminate your personal data.

6.1 European 16 Website

The European website for the fifteenth session of the competition is available, from the opening date of the competition, at the following url: www.european-europe.eu

It includes: the complete European rules for the European 16 competition; the session theme; the synthetic and complete site files grouped geographically or by themes; the juries' compositions; and an organisational chart of all the European structures.

The registration of the teams and the complete digital sending of the projects must be done via the European website.

6.2 Team Registration

Registration to the competition is done through the European website (Registration section) and implies the payment of a 100 Euro fee. There shall be no refund of the registration fee.

This fee includes one Complete Site Folder and the printing of the panels on a rigid support by the national secretariats. Payment is automatically confirmed on the website. The team can then access its personal area and download the Complete Site Folder for the selected site and the digital entry area.

Additional Complete Site Folders cost 50 Euro per site.

7 Information Available to Teams

7.1 Synthetic Site File (Available for Free)

The Synthetic Site Files present a summary vision of the site. They are available for free on the site presentation pages of the European website and help the teams to have a

global view of the sites. This document is in English (and sometimes also in the site language).

The Synthetic Site Files provide: Good-quality iconographic documents: 1 map of the city or conurbation identifying the location of the study site and giving the graphic scale; 1 aerial picture of the study site in its context identifying the location of the study site in red and the project site in yellow; 1 oblique aerial picture (semi-aerial) of the study site; 1 oblique aerial picture (semi-aerial) of the project site; 1 map of the area identifying the study site and the graphic scale; 1 map of the area identifying the project site and the graphic scale; at least 3 to 6 ground-level pictures showing the site's characteristic elements (topography, natural features, existing architecture);

Written information: the site scale – location – category; the profile of the team representative: architect or professional of the urban design; names of the town and place; population of the town and conurbation; surface area of the study and project sites; site representative, actor(s) involved, site owner(s); expected follow-up after the competition; the developer's and the city's specific objectives; strategic issues of the site; relation the session topic: "Living Cities."

7.2 Brief (Available for Free)

The Brief is a 20-to-25-pages illustrated document aiming at providing a better understanding of the main elements of the context through the existing elements as well as through the site's mutation issues and its environment. It is available for free on the site presentation pages of the European website in order to help the teams select their project sites. It includes the following elements: A summary of the main elements of the site; the site specificities – site representative; other actors involved; profile of the team

representative; expected skills among the team members; communication of the submissions; follow-up after competition; A detailed analysis of the regional and urban context, putting in perspective the transformations of the city and the region and including all the elements on this scale that may have a current of future influence on the site: mobility networks, ecological elements, urban structure, landscape, etc., within the general framework of the theme „Living Cities“; A detailed analysis of the study site putting the transformation of the site (the site and its environment) in perspective and illustrating how the session topic is taken into account.

The following information is also provided: Role of the study site in the city policy, with details on the goals of the planning imagined by the municipality; Programmatic framework: planned transportation networks; public and private spaces to build and/or upgrade, with assumptions about planned functions and/or dimensions; goals for public spaces and infrastructures; and detailed explanations of the choices of the developers for each aspect of the programmes. A detailed analysis of the project site putting in perspective the site transformation and the way to make it again „liveable“. The programmatic framework is also detailed, with: the spaces to build and/or regenerate, with functions and dimensions; the precise goals for public spaces and infrastructures; detailed explanations of the developers' intentions on the parts of the programmes to be included. The main elements linked to the european 16 topic and their implication on uses and flexibility of spaces (built and public), natural elements and implementation processes of the mutation. A description of the sociocultural context of the site, the city and the region and its evolution to help participants better understand the local urban lifestyles and the citizens' rhythms. A description of the economical context of

the site, the city and the region and its evolution to help participants better understand the potential „Living Cities“ to create. This document is in English (and sometimes also in the site language).

7.3 Complete Site Folder

(Download available upon registration.)

The Complete Site Folders include detailed visual documents on the city, the site, its context as well as plans, pictures and any graphic document required for the design process. They can be downloaded on the site presentation pages (after registration on the site and logging in to the website) and help the teams design their project on the chosen site. They include plans, pictures, diagrams and graphics of the following scales:

A. Territorial Scale – Conurbation

1 aerial picture of the city; 1 map on regional (urban geography) or urban scale (conurbation) with an appropriate graphic scale showing the major features structuring the area (buildings, networks, natural features).

B. Urban Scale – Study Site

1 aerial picture; at least 1 semi-aerial picture; at least 5 ground-level pictures showing the characteristic features of the study site: topography, natural features, existing architecture, etc.; plans with an appropriate scale; characteristic features: infrastructure, existing and future plans, etc.

C. Local Scale – Project Site

at least 3 semi-aerial pictures; at least 10 ground-level pictures showing the characteristic features of the project site: topography, natural features, existing architecture, etc.; plan(s) with an appropriate scale, showing: the project site's location within the study site and the plot divisions, constructions, natural elements, etc.; topographical map of the project site with an appropriate scale and, if

necessary, characteristic features (buildings and natural features to be retained or not, etc.)

8 FAQ

8.1 Questions on the Sites

A meeting is organised on each site with the teams and the municipalities and/or developers to give a detailed picture of the issues related to the site. The national structure of the site then publishes a report in English in a maximum of two weeks after the meeting. This report is available online on the site presentation pages of the European website. In addition to this an FAQ section on sites is open on the European website for a limited period of time (see calendar). Only registered teams can submit questions.

8.2 Questions on the Rules

An FAQ section on rules is open on the European website for a limited period of time (see calendar).

9 Submission of Entries

9.1 Digital Submission

Digital submission is compulsory. It includes the 3 A1 panels (visual elements), 4 pages (max) illustrated text explaining the link between the project and the theme of the ongoing session as well as the implementation and building processes of the project, documents proving the eligibility of the team members and documents for the communication of the project.

The complete submissions shall be submitted before midnight (UTC+2) on September 17th, 2021, on the European website (Entry section). Failure to comply with the hereunder-men-

tioned requirements may, eventually, if the jury decides it, result in the disqualification of the team. The number of entries per site is available on the European website on the European map of the sites (column on the right).

9.2 Anonymity and Compulsory Content

The site name and the project title must be displayed on every document: panels, illustrated text and communication documents. A specific code is automatically attributed to each project upon upload. The teams do not know this code, through which the jury members take note of the project. When anonymity is lifted, the teams' identities are revealed via an automatic link between the code and the team on the online projects database.

9.3 Language

The panels shall be either written in English or bilingual (English + the site language).

9.4 Items to Submit

Submissions include documents divided as follows: 3 vertical A1 project panels composed of visual elements of the project; 1 text presenting the ideas of the project (6 pages max.); Documents proving the eligibility of the team members; Documents for communication (3 images + a text of 800 signs, spaces included)

9.4.1 Panels Vertical A1 Format

Content: The 3 panels must: explain the urban ideas developed in the project with regards to the site issues and the thematic orientations of the session; develop the project as a whole, highlighting the architecture of the project, and particularly the relationship between the new developments and the site's existing context, including

three-dimensional representations of the project; develop the method foreseen for the implementation process of the project.

All graphic and descriptive documents must have a graphic scale.

Technical Specifications:

PDF format; Vertical A1 (W 594 mm × H 841 mm) Maximum 20 MB; One box (W 60 mm × H 40 mm) is left blank in the upper left corner for the automatic insertion of the code; the name of the city appears next to it

Panels numbered from 1 to 3 in the upper right corner; the team is free to decide on the positioning of the proposal title

9.4.2 Text

Content: This text must present the ideas of the project and its links with the theme of the session but also the process and periods of implementation.

Technical specifications: 3 to 4 pages (maximum) with limited visuals; PDF format; Vertical A4 (W 210mm × H 297mm).

Documents to prove the eligibility of the team members Documents for the disclosure of names and verification of the validity of the proposals shall be uploaded as PDF's on the European website.

Personal information includes:

A. For the Team:

The team form and the declaration of author- and partnership, and of acceptance of the competition rules available online on the team's personal area; to be filled out and signed;

B. For Each Associate:

A copy of an ID document with a picture, providing evidence that they are under the

age of 40 at the closing date for submission of entries (see calendar).

A copy of their European degree as an architectural, urban or landscape professional (architect, landscaper, urban planner, or others...) or proof of such a status under the law of a European country.

C. For Each Contributor:

A copy of an ID document with a picture, providing evidence that they are under the age of 40 at the closing date for submission of entries (see calendar).

No other document than the ones above-listed is necessary.

Attention: The personal documents must be uploaded individually for each team member. Only team members that correctly registered and submitted their eligibility documents separately shall be considered within the team final composition.

The upload of one sole document with all the required information (copies of the ID's and degrees) will not be accepted.

9.4.3 Documents for Communication

Each project must be summered up as follows: One short text of 800 signs (spaces included, to be typed in during submission) developing the project ideas; 3 separate JPG images that symbolize the project (max. 1 MB per image).

9.4.4 Communication Video

Winners and Runners-up of the E16 session will make a communication video presenting their proposal and will be sent, after the announcement of the results on Monday, December 20th, 2021, to the European Secretariat before January 16th, 2022.

- length: 3 minutes (maximum);
- Format : MP4 video with the codec H.264;
- Language for the voice and/or texts: English;
- Content: the main ideas of the project linked to the theme of the session and the possible implementation process.

9.5 Control of the Submissions

Each team can check the upload of their projects on their online personal area on the European website. They can also –if needed– modify these documents until the deadline for submissions.

A period of 6 days is left open after the deadline for submissions (see Calendar) for the European secretariat to control the upload of each submission sent before the expiry of the deadline, as well as to correct the potential problems that might have appeared during the upload of the documents.

10 Results and Prizes

10.1 Results

All the results for European 16 (winners, runners-up, special mentions) are available online from December 20th, 2021, on the European website (Results section).

10.2 Winners' Prize

The authors of the Winner projects receive a reward of the equivalent of 12,000 Euro (all taxes included) in the currency of the site's country (at the exchange rate on the date of the announcement of the results). The organizers undertake to abide by the decisions of the national juries and to pay the reward within 90 days of the announcement of the results.

10.3 Runners-Up's Prize

The authors of the Runners-up projects receive a reward of the equivalent of 6,000 Euro (all taxes included) in the currency of site's country (at the exchange rate on the date of the announcement of the results). The organizers undertake to abide by the decisions of the national juries and to pay the reward within 90 days of the announcement of the results.

10.4 Special Mentions

A Special Mention can be awarded to a project considered innovative although not completely adapted to the site. The authors of such proposals do not receive a reward.

11 Communication of the Competition

11.1 Events

At the National Scale of the Organizing and Associate Countries

Promotion is organized around the competition launch. After the first jury round, an exhibition or online publication of all the submissions on one site can be organised, provided that it respects the teams' anonymity and it is correctly communicated beforehand. This communication shall be specified in the site brief.

The results announcement is accompanied with results ceremonies and presentations and/or workshops creating a first contact between the winning teams and the site representatives.

At the European Scale

A European event called Inter-Sessions Forum is the link between a finishing session and the beginning of the new one. This forum gathers the winning teams and site representatives of the finishing session and the site representa-

tives of the new one. Working-groups are organized around the results and first implementation steps of the projects awarded during the last session.

A 500 Euro compensation is granted by the National Secretaries to each winning team (winners and runner-up) participating to the Forum to cover the journey and accommodation expenses.

11.2 Publications

The competition results can be the opportunity for publications in every organizing or associate country.

The European secretariat publishes a catalogue with the European results along with expert analyses. This catalogue is available either for free consultation or for sale on the European website. One exemplar is given for free to each winning teams (winner, runner-up, special mention).

11.3 Websites

Websites are open by the national and European structures to promote the current session, future events and archives (previous sessions, team portraits, etc.). At the European level, the European website allows participants to find information on all the sites, to register to the competition, to submit their projects and to know all the results of the current session on the European level.

12 Rights and Obligations

12.1 Ownership

All material submitted to the organizers becomes their property, including reproduction rights. The intellectual property rights remain the exclusive property of their author(s).

12.2 Exhibition and Publication Rights

Moratorium on Publication

Teams may not publish the documents submitted to the competition or disclose their names by using their project for any communication before the official announcement of the results. Any such publication may result in the disqualification of the team.

Publications

The organisers reserve the right to publish all the projects submitted to them after the official announcement of results. Projects are exhibited or published under the names of their authors.

12.3 Disputes

The Council of the European European Association, which is empowered to arbitrate, shall hear any dispute. In the event of jurisdiction, this will take place in the respective country.

13 List of European 16 Competitions

The Contact section of the European website shows the detailed national competition conditions country by country (number of sites and prizes, conditions and rules for implementation, etc.) as well as the composition of the National and European structures, (with names of the people involved). The Jury section of the European website lists the members of the national juries.

14 Inter-Sessions Forum

Before the launch of the competition, the Inter-Sessions Forum represents the link between a finishing session and the beginning of the new one. This forum gathers the winning teams and site representatives of the finishing session and the site representatives of the new one.

This Forum, for European 15/16, took place as an online forum from January 18th to 22nd, 2021. The next Inter-Sessions Forum – presenting the European 16 results and the sites proposed for European 17 – is scheduled for November 2022.

15 Organization of the Juries

15.1 Technical Commissions

Each country sets up a Technical Commission, which does not judge but examines all the projects submitted in the country to prepare the work for the jury. Its members are appointed by the national structures and the list of members is communicated to the European European Association. This committee may include city representatives and national experts.

16 Juries

16.1 Composition

Each country sets up a jury, whose members are appointed by the national structure and approved by the European European Association.

The jury considers all the projects that comply with the competition rules and is sovereign in its judgement. In the event of non-compliance with the rules, it has discretion whether or not to disqualify the entrant.

According to the country, the jury consists of 7 (or 9) members, that are independent and are not linked to a site proposed to the competition and is constituted as follows:

2 representatives of the urban order (public or private) – or 3 in case of a 9-member jury;

4 representatives of the architectural and urban design (architects, landscapers, urban

planners) – or 5 in case of a 9-member jury –, among which at least 2 architects;

1 public figure.

At least 2 out of the 7 members must be foreigners – at least 3 in the case of a 9-member jury. The national structure also appoints at least 2 substitute jury members, representatives of the architectural and urban design. The jury members are identified when the competition is launched and their names are listed for each country on the Jurys section of the European website.

Jury members may consult city and site representatives, but on no account may the latter have voting rights for the final selection of winners, runners-up and special mentions.

16.2 Working Methods and Evaluation Criteria

The jury's decisions are final in compliance with European rules. Before beginning to work, the jury receives recommendations from the European Association.

The jury meets in 2 separate sessions at different periods of the competition:

Local Jurys

At the beginning of this session, the jury appoints one of its members as chairman and agrees on its working method. Sites representatives can be integrated to this jury level and, in some countries, may participate to the selection of the shortlisted projects. The jury then studies the projects that do not comply with the rules and decide whether or not to disqualify them.

Later on, it assesses the projects on their conceptual content and the degree of innovation according to the European 16 topic and shortlists 20% maximum of the submitted projects.

National Jury

During the second round, the jury examines – on its own and independently– the shortlisted projects and points out the winners, runners-up and special mentions. The jury could assess the projects on basis of:

- the relationship between concept and site;
- the relevance to the questions raised by the topic and in particular to the issues of sustainable development and adaptability;
- the relevance of their programme to the general brief for their specific site;
- the potential for integration into an urban process adapted to the site's issue;
- the innovative nature of the proposed public spaces;
- the consideration given to the connection between different functions;
- the architectural and technical qualities

The jury finally writes a report giving the reasons for the choice made in relation to the requirements of the competition and the concerned sites.

Each country budget includes the equivalent of a Winner's and a Runner-Up's prize per site. Still, each entry is judged on its sole merits and the winning teams are not chosen on basis of an equal distribution between sites – the jury can therefore distribute prizes among entries up to its will or decide not to award all the prizes. In this case, the reasons shall be made public. The jury may single out projects for Special Mention. These projects are recognised by the jury as presenting innovative ideas or insights, yet not sufficiently suitable for the site. The authors of such projects do not receive any reward.

The jury can decide to replace a prize-winning project, if disqualified after the validation of competition participation, by another project if the quality is satisfactory.

16.3 Disclosure of Names

The projects assessed by the experts and juries are anonymous.

Once the decision of results is taken, the jury reveals the names of the winners, runners-up and special mentions. This operation is done through the European database, which automatically links the codes of the projects and composition of teams.

16.4 Results Announcement

After disclosure of the names of the winning teams and following any adjustments to rankings that may prove necessary, the national secretariats ratify the decisions and disclose the names of all the participants. The European secretariat publishes the complete list of results online on December 20th, 2021.

16.5 European Comparative Analysis

16.5.1 European Comparative Analysis Committee

Between the two jury meetings the members of the European Scientific Committee meet to familiarize with the anonymous projects shortlisted by the different national juries. They compare the projects and classify them by theme on basis of the problems raised by the site categories and the proposed ideas. Under no circumstances does the European comparative analysis committee express a judgement – it simply proceeds to a classification of the projects. Its role is purely thematic and comparative.

16.5.2 Forum of Cities and Juries

Between the two national jury sessions a Forum gathers the national juries and site representatives to discuss the conclusions of the European comparative analysis committee. It aims at ensuring that the different

experts participating in the evaluation process share a common culture. Projects remain anonymous throughout the procedures and are only identified by their code.

17 Implementations

17.1 Activities to Promote Implementations

The European Association and the national structures under- take to do what is required to encourage cities and/or developers (or their nominated promoters.) that have provided sites for the competition to engage the prize-winning teams for the operational phase.

The national structures undertake to organize a first meeting with the prize-winning teams within 90 days after the official announcement of results, between the partners of the cities and the clients. This meeting may take various forms and is the starting point for the site representatives to initiate implementation processes with the prize-winning teams on the ideas developed in the projects.

In some countries – and provided this step falls under public market regulations – a maximum of 3 winning teams can be involved in a study and/or workshop organised in partnership with the European national structure and the site's representatives, after which the latter – the city or another public official – chooses the team(s) for implementation. This new consultation work is paid.

The operational follow-up consists of a series of stages: preliminary studies, workshops, urban studies, operational studies, construction and within a contractual agreement. If necessary, they may be implemented on another site than the competition site as long as the ideas of the prize-winning projects are maintained. The prize-winning teams must comply with the professional rules that apply in the country where they are engaged to

work. After the competition, the prize-winning teams must appoint one of their architect members as a representative, who is the sole spokesperson for the team with the municipalities and/or developers. A summary of the countries' legislations on the rules of professional practice is available in the Contact section of the European website (Complete Card).

17.2 Websites

The European national structures present the implementations at the national level. The European secretariat presents completed or ongoing implementation processes on the European website (Exploration section).

17.3 Implementation Books and Booklets

The European secretariat coordinates European publications on implementations, showing winning and runner-up projects from previous sessions that were implemented or are still in progress.

Part 2



Competition Task



1 Conditions and Goal

The city of Wernigerode lies in the northern region of the Harz Mountains in Saxony-Anhalt and enjoys nationwide renown as a tourist destination. Topographical conditions allow only for urban expansion to the north. Population figures are stable with a slight downward trend in recent years. There is currently a shortage of flats for young families to let in the city, so most families settle for housing in the surrounding communities. The GWW (Gebäude- und Wohnungsgesellschaft Wernigerode mbH, or Wernigerode Building and Housing Association mbH) is seeking to change this by redeveloping certain areas of the city. In the immediate vicinity of Bürgerpark and commercial areas, 30 to 40 rental flats are planned to be constructed in multi-generational buildings with green open spaces and communal areas for everyone.

Beyond the formation of a periphery prone to urban development, the focus will lie on the economic efficiency and sustainability of the buildings. As such, the emphasis will be less on high-tech solutions and more on a sensible and forward-looking building design with a clear structure and good spatial concepts. In terms of price, the aim is for the flats to be amenable to the Saxony-Anhalt rental market of 6 to 10 euros per square metre.

In planning the site at Veckenstedter Weg 76–80 (Project site 1), the GWW aims to redefine a clear urban interface to its surrounding neighbourhoods as a potential gateway.

As for the Veckenstedter Weg 14 a / Gießerweg 9 site (Project site 2), at issue is also the question of fortifying an urban development vertex and finding a path to an urban mix of commercial enterprises, railway lines, street spaces, and a kindergarten. Thus, a joint planning consideration of the Veckenstedter

Weg 76–80 and Veckenstedter Weg 14 a / Gießerweg 9 sites is sought with these two areas as the northernmost and southernmost vertices of the district development.

2 Reference to the Theme of European 16

The two project sites mark the corners of an area that today is overwhelmingly defined by an abundance of gardens marked by rather fragmented and small-scale development (former grower gardens). From an urban development perspective, it would be of interest to link traditional concepts of the garden city and settlement movements to the heightened attention given to the green spaces in today's city from a social and ecological angle.

An inner development of cities that is meaningful from an ecological angle (reduction of land consumption, soil sealing, traffic requirements) leads to open spaces that must now provide more than just locations for contemplation or ecosystem service. As community gardens or locations for local food production, they make a significant contribution to socio-ecologically sustainable urban development.

Although developing the study site is not in planning for the short term, proposals are needed now for how the 'Living City' of the future can look. Current debates – such as the populist polarisation between the single-family home on one hand and the high-rise on the other – reveal the urgent need for more differentiated proposals and new ideas for urban life ('urban imaginaries') that can serve as models far beyond Wernigerode.

Fig.1

City plan of
Wernigerode

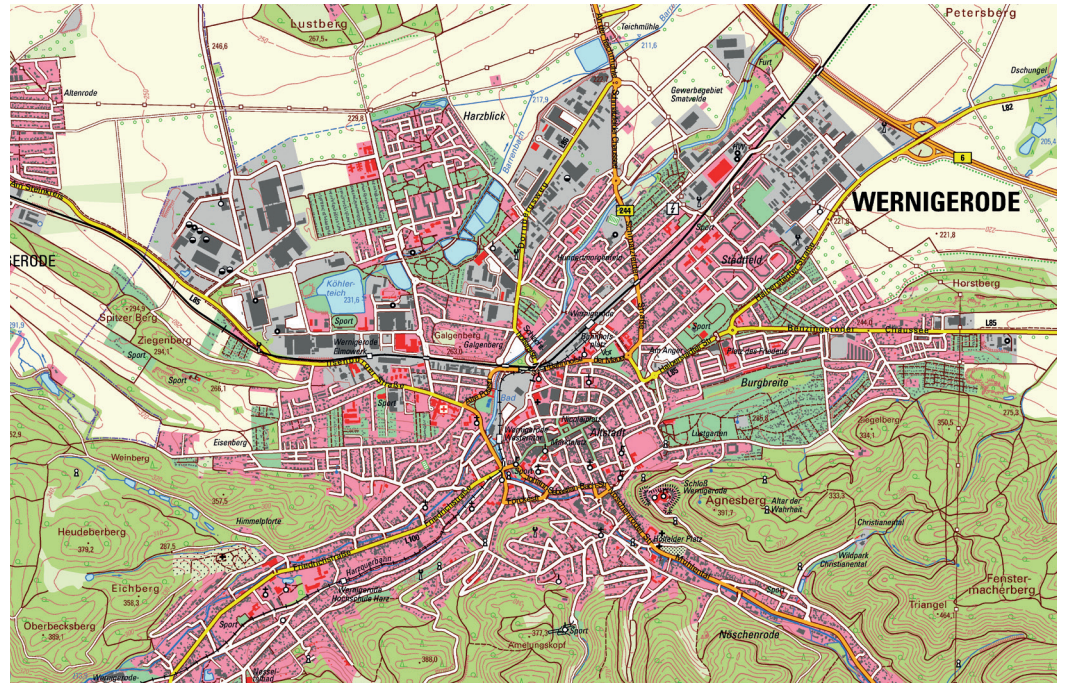


Fig. 2, Fig. 3



Fig. 4, Fig. 5



Fig. 2
Castle Werni-
gerode

Fig. 3
Town hall and
market square

Fig. 4
Castle Werni-
gerode with a
view on the
historic city
center

Fig. 5
Old Town

3 The City of Wernigerode

The city of Wernigerode is located in central Germany in the northern region of the Harz Mountains along the railway line between Halle (Saale) and Hanover. The highest peak of the range is about 12 km away. The city lies in the transition area between the plains and the low mountain range – the Brocken – and its characteristic valleys. This topographical transition between the lowlands in the north and the dynamic landscape in the south gave rise to the city's founding and is also the reason why, in terms of area, it can only grow northward. The site was first mentioned in documents from 1121 in connection to Count Adalbert zu Haimar, who settled here and henceforth called himself Count von Wernigerode. The old town lies at the entrance to the valley and in the transition area to the Harz low mountain range in the south. Beginning in the 1890s, the city expanded to the east and west, and then from 1940 until today to the north, mainly by way of housing developments and, in some cases, large-scale commercial settlements.

The city of 33,000 residents draws its economic might from a mix of medium-sized companies in the automobile and metal industry and the production of luxury food-stuffs as well as trade and services. An additional economic focus is tourism. The city's appeal as a resort town attracts 1.4 million tourists annually. The area of the city is approx. 125 km², including the city proper and its five outlying districts.

4 Study Site

The study site comprising both project sites lies in the northwest part of the city. The area is separated from the historic city centre by the Hanover-Halle (Saale) railway line. The existing configuration is highly heterogeneous. Large-scale commercial enterprises,

two- to four-storey residential buildings (single-family homes, multi-family dwellings, and row constructions) along with garden plots create a widely diverse composition. Bordering the area to the north is Bürgerpark, the grounds of a former horticultural show, with expansive meadows and bodies of water and various recreational opportunities. The main railway station is located in the immediate vicinity and can be reached by bicycle in 10 minutes. The route crosses a pedestrian and cyclists' bridge west of the main railway station and passes underground beneath a crossroads area on Schlachthofstraße. The area is also tangent to Veckenstedter Weg to the east.

The neighbourhood is framed by four streets and its entirety was laid out in one go. It is accessed via two through streets with modest traffic. The housing development at the northwest corner dates to 1890–1930 and was planned as factory housing and a residential estate. The large gardens were conceived as self-supporter gardens. Additional green areas are currently being used as allotment gardens and producer gardens and are also marked by a degree of fallow land. A kindergarten is housed on Gießerweg. There are not yet any other social facilities.

The goal should be to give structure to the focus of reflexion (study site) for its development as a residential area with recreational opportunities, and to propose the necessary social and technological infrastructure at appropriate locations. Attention should be paid to ensure a development process that, in its both flexible and gradual nature, leaves behind no rudimentary urban space.

Ideas are sought to expand diversity of both use and housing while promoting integration. Furthermore, statements should be made in terms of sustainability and the circular economy, while mobility and energy concepts with future resiliency would also be desirable.

The result should be a lively, mixed-housing neighbourhood that integrates with its surroundings and accommodates additional uses that invigorate the quarter and can stimulate sustainable development.

4.1 Competition Site

4.1.1 Project Site 1 – Veckenstedter Weg 76–80 (Zaunwiese)

The Veckenstedter Weg 76–80 site is a mixed-use area near the city centre, Bürgerpark and the grounds of the state horticultural show, which were laid out in the 1930s with inspiration from the garden city movement. The area is now characterised by a mix of single-family homes and blocks of flats, streets and railway infrastructure and numerous special-use endeavours. The neighbourhood is well-connected via roads. The planned Veckenstedter Weg 76–80 site lies adjacent to a popular Waldorf kindergarten.

The property in Project site 1 is an existing block of flats south of the horticultural show grounds that was built in 1934 with 21 residential units and a plot size of 4,220 m². The building acts as a prelude to the neighbourhood from the north and was a late addition to the garden settlement. It is a two-storey, freestanding residential complex that would be uneconomical to renovate.

The existing structure will be completely demolished and replaced by a modern development, whereby the number of residential units will increase from the current 21 to between 30 and 40. The aim is to create a mix of different types of housing that facilitates intergenerational living, offers communal areas, and creates homes for all income levels and walks of life. A development strategy is sought that creates access to this neighbourhood while also establishing a sustainable residential property. The development should be economical and meet all

needs without overly restricting open spaces. The building/s should blend into the surroundings while also asserting a special role.

4.1.1.2 Project Site 1 – Green Areas and Open Spaces

To the north of the competition site lies the site of a former state horticultural show that now functions as expansive recreational grounds with sizeable bodies of water for the entire city. An accessibility network along with small public squares and green spaces are expected for the study site as well as for the two project sites (green concept). Green areas and tree locations on the building site should be included in the considerations.

4.1.1.3 Project Site 1 – Access

The site is sufficiently accessible. A sustainable accessibility structure is expected for the larger study site, with proposals for an implementation in stages.

4.1.1.4 Project Site 1 – Contaminated Areas, Technical Requirements, Framework Conditions

There are currently no known contaminated areas or limiting framework conditions (except for noise abatement).

4.1.2 Project Site 2 (Veckenstedter Weg/Gießerweg)

The property in the south of the study site has an area of 3,778 m² and contains a 2-storey residential building constructed at an angle. The building dates to 1940 and currently has 17 residential units. It is accessed by a side street off of Veckenstedter Weg and then via the dead-end road Gießerweg. A popular Waldorf kindergarten borders the property to the east. The open area to the north is also part of the project site.

Fig. 6

Picture of the
project site 1,
Veckenstedter
Weg 76–80



Fig. 7

View on the
project site 1,
Veckenstedter
Weg 76–80



Fig. 8
View on the
project site 2
(side: Gieß-
weg 9)



Fig. 9
Semi-aerial
picture of the
project site 2



The project site 2 Veckenstedter Weg 14 a/ Gießerweg 9) currently contains freestanding two-storey residential buildings comprising almost 40 flats, only two of which were recently occupied at Veckenstedter Weg 14. Renovating the blocks of flats would be uneconomical, but the site is attractive. As owner of the planning site, the city of Wernigerode's municipal affiliate, the GWW, is planning to demolish the dilapidated construction in 2021 and 2022 and rebuild it.

The goal is to create a mixed residential quarter with ground floors used for other compatible purposes. Both the elevation (underpass) and the noise factor vis-à-vis the railway line must be taken into account. This vertex can act as a point of departure for a structural planning of the entire southern quarter and will thus set benchmarks for future development. It will play an important role as an initial step in urban planning as well as in the considerations of use and access. The entire open area should be included in the considerations.

4.1.2.1 Project Site 2 – Green Areas and Open Spaces

To the north of the competition site lies the site of a former state horticultural show that now functions as expansive recreational grounds with sizeable bodies of water for the entire city. An accessibility network along with small public squares and green spaces are expected for the study site as well as for the two project sites (green concept).

Green areas and tree locations on the building site should be included in the considerations. The open area to the north of the property can also be replanned. A small-scale green structure is sought that establishes a usage relationship. The property should also be linked to existing networks (green, access) in the surrounding area.

4.1.2.2 Project Site 2 – Access

The area is sufficiently accessible in the study site. A sustainable accessibility structure is expected for the larger study site, with proposals for an implementation in stages. The project site is accessible from the west by way of a narrow dead-end road. Possibilities for turning around are rather limited. Measures for addressing the railway tracks running along the south of the site should be taken into account.

4.1.2.3 Project Site 2 – Contaminated Areas, Technical Requirements, Framework Conditions

No limiting framework conditions are known.

5 Statement of Task

The goal is to develop a sustainable ecological and mixed framework plan for the larger study site that can be implemented in smaller, sensible building and development phases. Project sites 1 and 2 are considered to be initiation projects that will set a framework for future development.

Project site 1 will mark a northern entrance to the city and produce between 30 and 40 residential units. This development can also create an urban edge and function as a filter. This is dependent on the design.

Project site 2 should propose a sustainable and integrative residential building while providing a response to the location at hand (railway, street, topography). It should also create between 20 and 30 residential units.

Key figures for both project sites are not provided; instead, they will develop from the surroundings and conditions and will depend on the design. We are seeking ideas for housing and living for the next decade.

Fig. 10

View of Friedrich-Naumann
Straße



Fig. 11

Hill on Am
Galgenberg
Straße



Fig. 12

View of Am
Galgenberg
Straße



Fig. 13

View of August-
Bebel-Platz



Fig. 14

Aerial view of the two project sites in the strategic site





Fig. 15
Semi-aerial picture contain-
ing both project
sites (project site
1 in the back;
project site 2 in
the front)

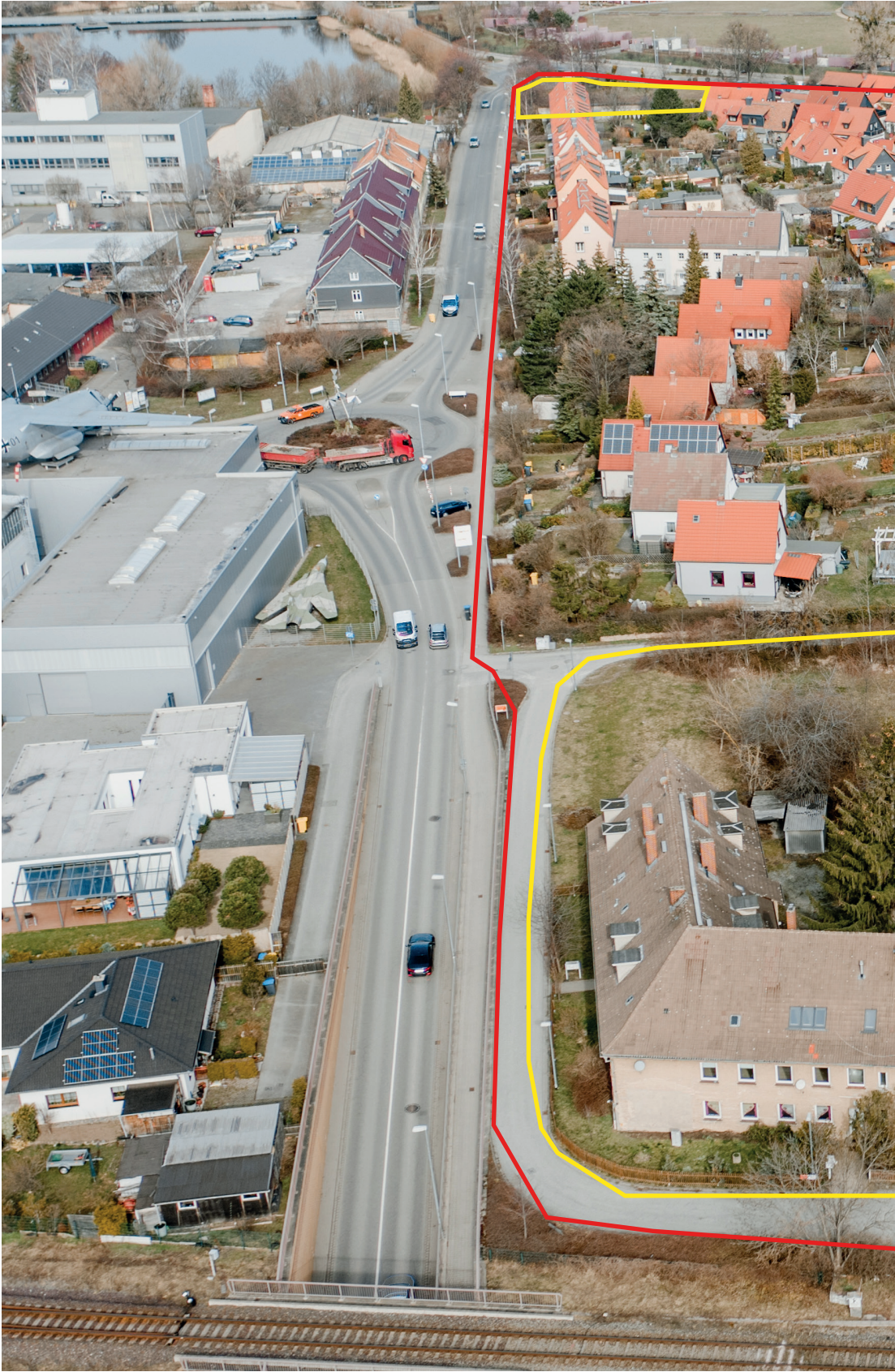




Image Credits

Fig. 1
City plan of Wernigerode
Town Archive of Wernigerode

Fig. 2
Castle Wernigerode
Semmer, Brozio, Brinkmann GbR

Fig. 4
Town hall and market square
Town Archive of Wernigerode

Fig. 3
Castle Wernigerode with a view on
the historic city center
Town Archive of Wernigerode

Fig. 5
Old Town
Town Archive of Wernigerode

Fig. 6
Semi-aerial picture of the project site 1,
Veckenstedter Weg 76–80
Town Archive of Wernigerode

Fig. 7
View on the project site 1,
Veckenstedter Weg 76–80
Town Archive of Wernigerode

Fig. 8
View on the project site 2
(side: Gießbergweg 9)
Town Archive of Wernigerode

Fig. 9
Semi-aerial picture of the
project site 2
Town Archive of Wernigerode

Fig. 10
View of Friedrich-Naumann Straße
Town Archive of Wernigerode

Fig. 11
Hill on Am Galgenberg Straße
Town Archive of Wernigerode

Fig. 12
View of Am Galgenberg Straße
Town Archive of Wernigerode

Fig. 13
View of August-Bebel-Platz
Town Archive of Wernigerode

Fig. 14
Aerial view of the two project sites in
the strategic site
Town Archive of Wernigerode

Fig. 15
Semi-aerial picture containing both
project sites (project site 1
in the back; project site 2 in the front)
Town Archive of Wernigerode

Imprint

Publisher
Europäer – Deutsche Gesellschaft zur
Förderung von Architektur,
Wohnungs- und Städtebau e.V.
Friedrichstraße 23A
10969 Berlin
Germany
www.europäer.de

Editors
Lola Meyer
Vesta Nele Zareh

English Translation
Amy Klement, Jonathan Lutes

Proofreader
Kerstin Wieland

Graphic Design
Christina Schmid and Simon Malz

Printer
Offsetdruckerei Karl Gramlich

April, 2021

