

What we find on it?

The conceptual urbanistic, landscaping and architectural ideas of the project that we propose for the strategic site, in particular links between the area and the centre of Feldafing is based on Landscape. Thinking about the city of Feldafing, the "Pearl on the Lake", we take all those things that could help us to take advance in the improvement of the city and its potential. We ask ourselves "What could we make in all over the site?". The answer, for us, begins with other question: "What have we? What can we use to make it possible?" The building complex that is the subject of the European competition is the Telecommunications School Barracks Feldafing, that nowadays is related to the German Bundeswehr. We could improve the connection if we find one nexus in order to relate the ambit within the city. The piece we choose is the Canteen. This building can also contain any special program It can be different as today. A Museum of German Telecommunication Army ist affordable as a City Centre.

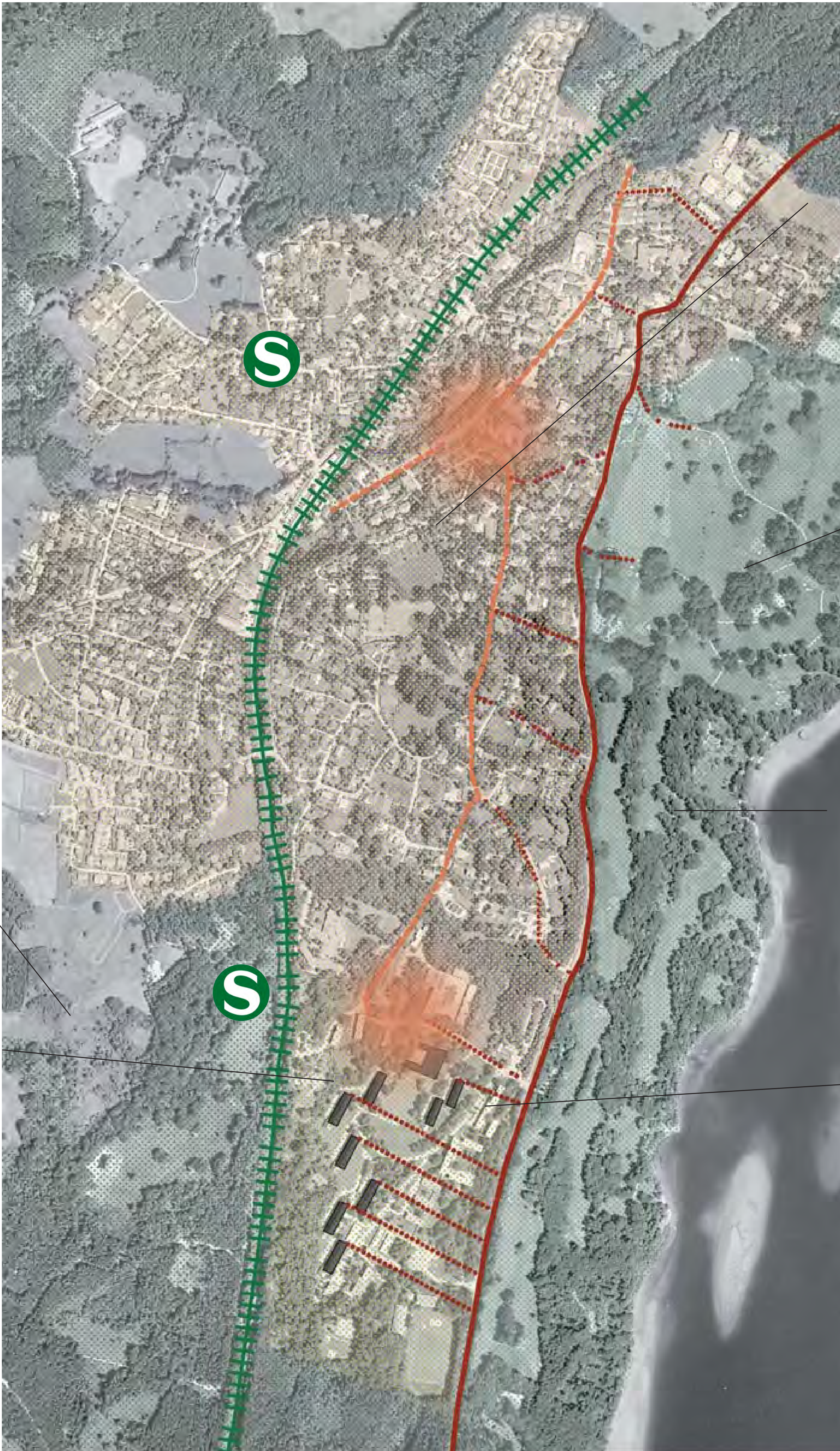
With it we want to preserve some of the memory. What there was here must dialogue with what is to be placed. As a matter of fact this is our moto: The architecture, that is supposed to be located in a place, must not modify such place but explain it.



**The Forest:** The Forest is surrounding the Site. This presence is to be preserved.



**Sturmblockhäuser:** In the 1930s the National Socialists established an elite school in some of the villas and newly constructed so-called "Sturmblockhäuser". These are to be conserved.



**Tipologies:** Taking a look to the different topologies in Feldafing we realize that the architecture has connections with Clima and Location. These typical roof can give us a chance to interpret it with the new architecture. Modern architecture with old language?



**Leisure:** Golf camp and Lake are the perfect symbols to get the atmosphere of Leisure and Relax that citizens of Feldafing want. Is there uses to complement and to reinforce the existing ones? Could they be attractive? How?



**Landscape** The pearl must be so called because the landscape. As a matter of fact, this issue is complex. How could we make architecture without a kind of transformation of the landscape?

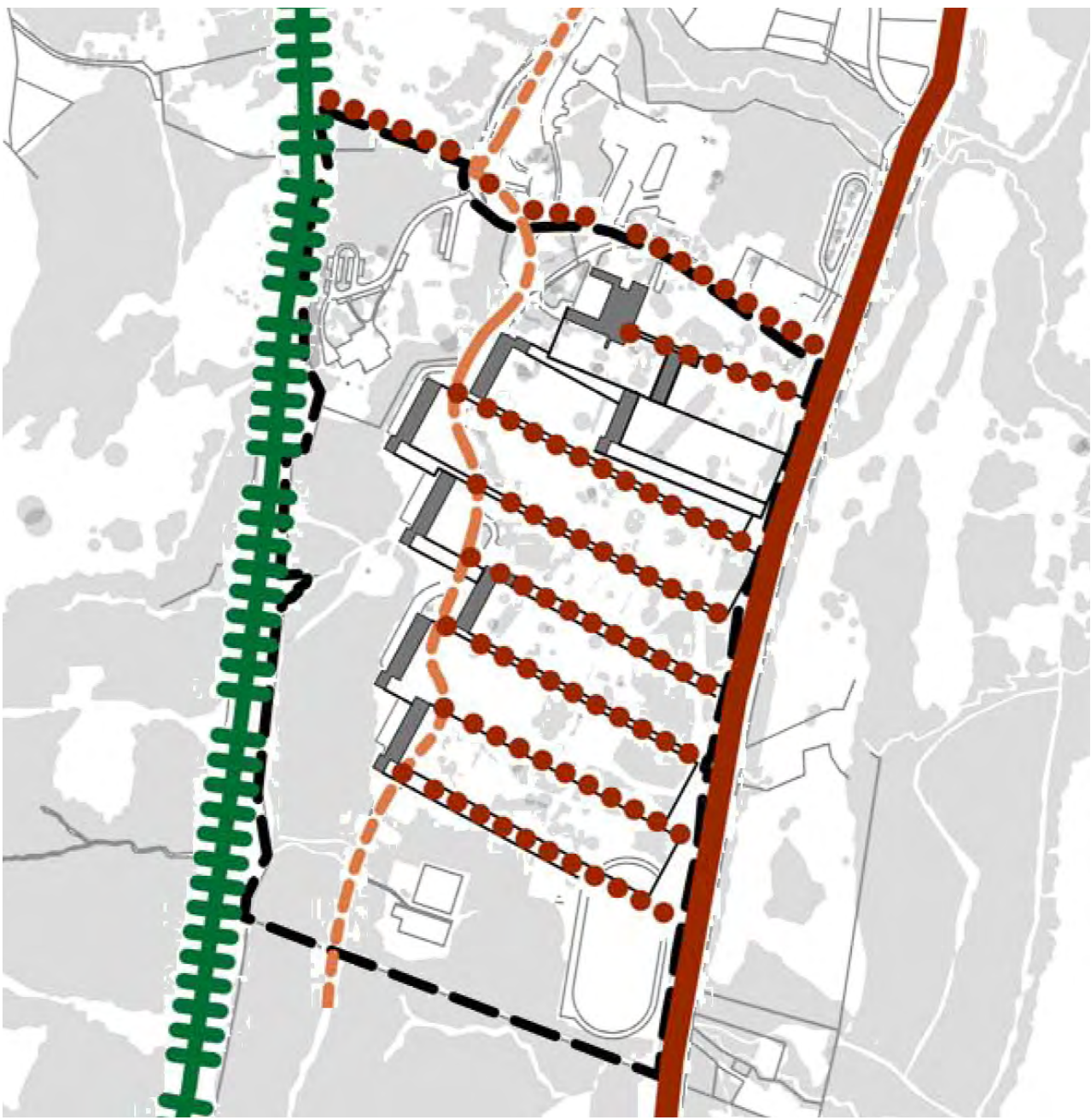


**Existing elements:** Can they live with the new plan and integrate in the new urban structure?



**Sky line:** Can we preserve the character and integrate our new architecture in such a Landscape? Maybe could we use Land-Art as reference?. Can it be interactive or passive?

Tools and Goals



**Connectors:** The site ist connected by railway and surrounded by one street from south to north, which separates Golf facilities and site. Our goal is a new Station for S-Bahn near the Canteen and different branches from the street to the parking that we locate under the earth. Such Parking would disappear from the sight of the landscape but serves all the facilities as Spa, Swimming Pool,... We cannot imagine this site with so many cars in the middle because nobody parks his car in the middle of a forest. We must preserve pedestrian circulation from north to south by 3 plateaus with different levels with no ramps. In the other side, we propose a circulation from west to east with artificial topography barrier free.



**Diagramme of Uses** We propose a diagramme of uses from the city to the forest. In Nord we place the Bands which the municipal uses haven. The uses are such markets, public events or handcraft ateliers. Our first fold begins with these ateliers for citizens. They can learn cooking, handcrafts, or whatever they plan. They have also a big hall in which they could organise exhibitions and events related to these citizens. The following bands are school and mall. This is for every day but thinking about families with children; it could be interesting to place a Mall nearby in order to buy and in the same time picking up the children. The last bands are for pure leisure time. Spa, hotels and Sport facilities with swimmingpool, tennis court. These bands are near the forest. All those uses could easily fit in it.

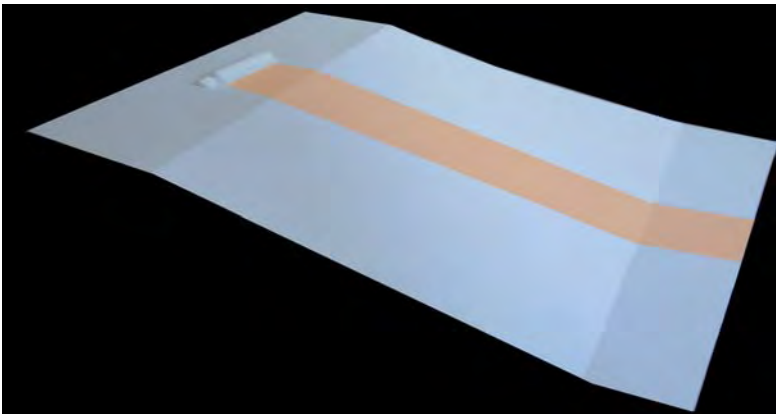


**Mixture of nature** We must work with this concept as we work in the forest with architecture. We can propose a kind of mixture between nature and architecture, that it works. These three hearts Citizens, School and Leisure have different branches that have their implication also on the free space outer- Biergarten, Fairs, Markets, Sports, Free space cinema, Concerts in open air....all of these activities are on the bands, in the landscape out of architecture, so well as possible. But we go further. We want that the result is actually minimal. We will get such mixture of uses and natures, but without limits between each other. Our architecture should be like the nature in every aspect: Material and conceptual

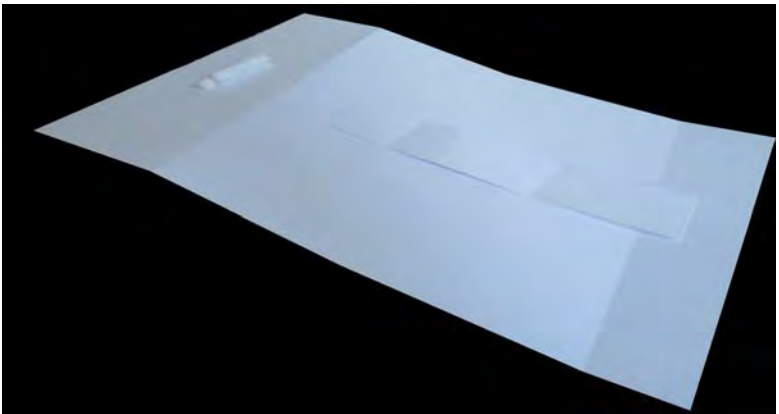


Strategies

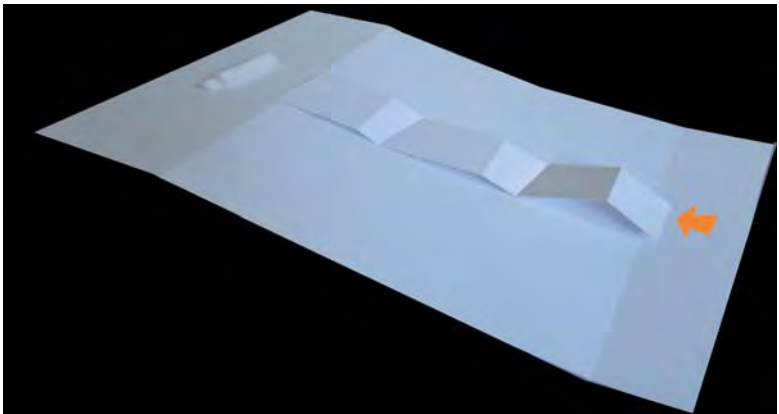
How could we make these folds with a law? Actually all these look like something aleatory but we can include as a factor the density of citizens which they will use them. For example, let's took a look at the common stripe. It contains shopping mall, small business spaces, press, and meeting points on it. We need only to calculate the density for the new city in the future that could live here. So we get different folds on each band with different uses to apply. From north to south we can realize that workshop facilities for the activities are smaller and more compact as the sport facilities in south. What is more. Every strip could be built in different periods. We only give the plot. That is our Active Land Art because the city decides when and what is to be built.



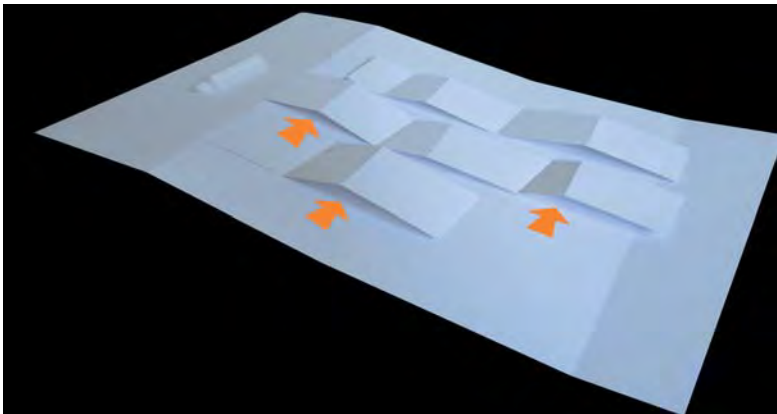
Band: Measure and Proportion



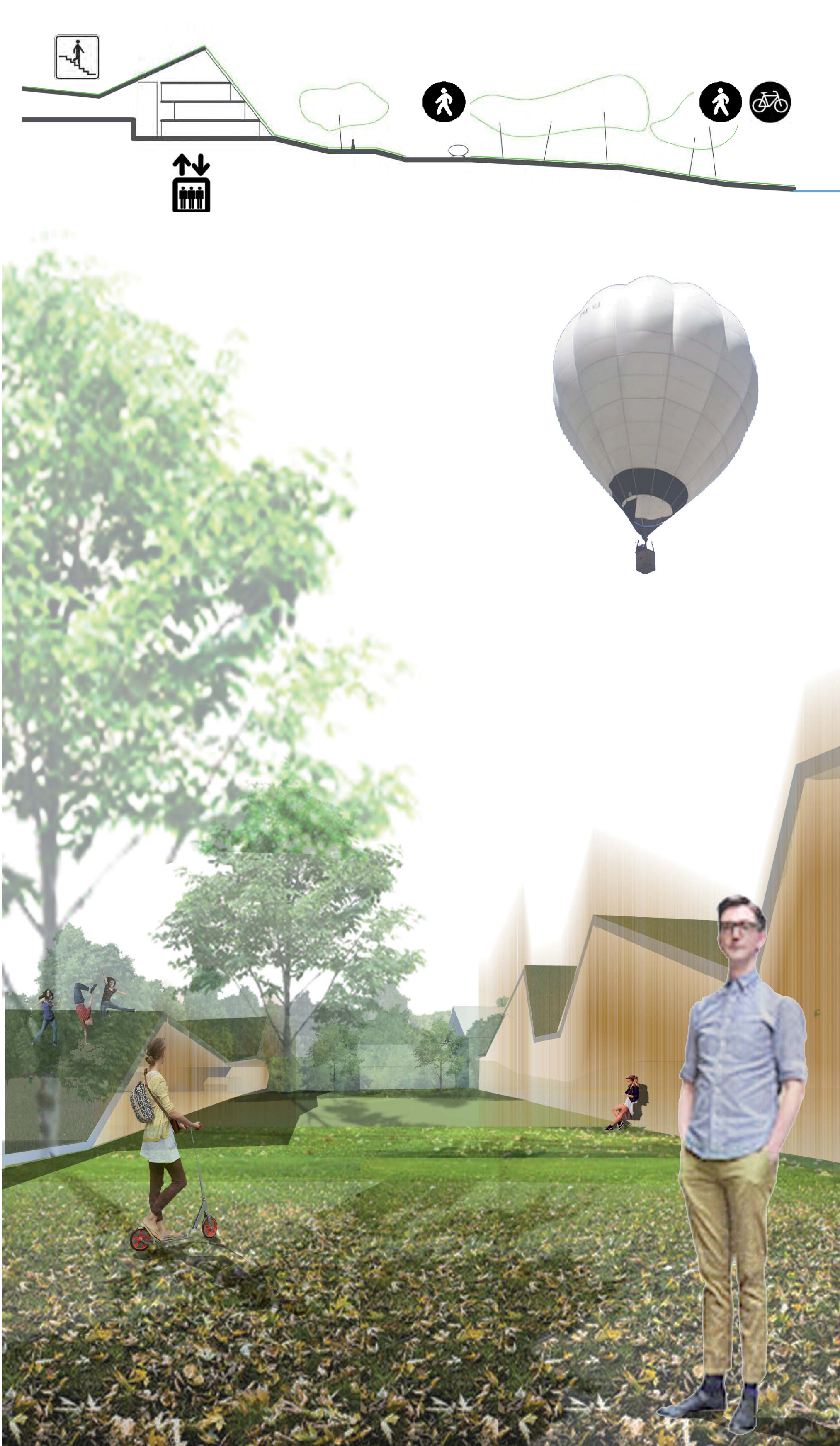
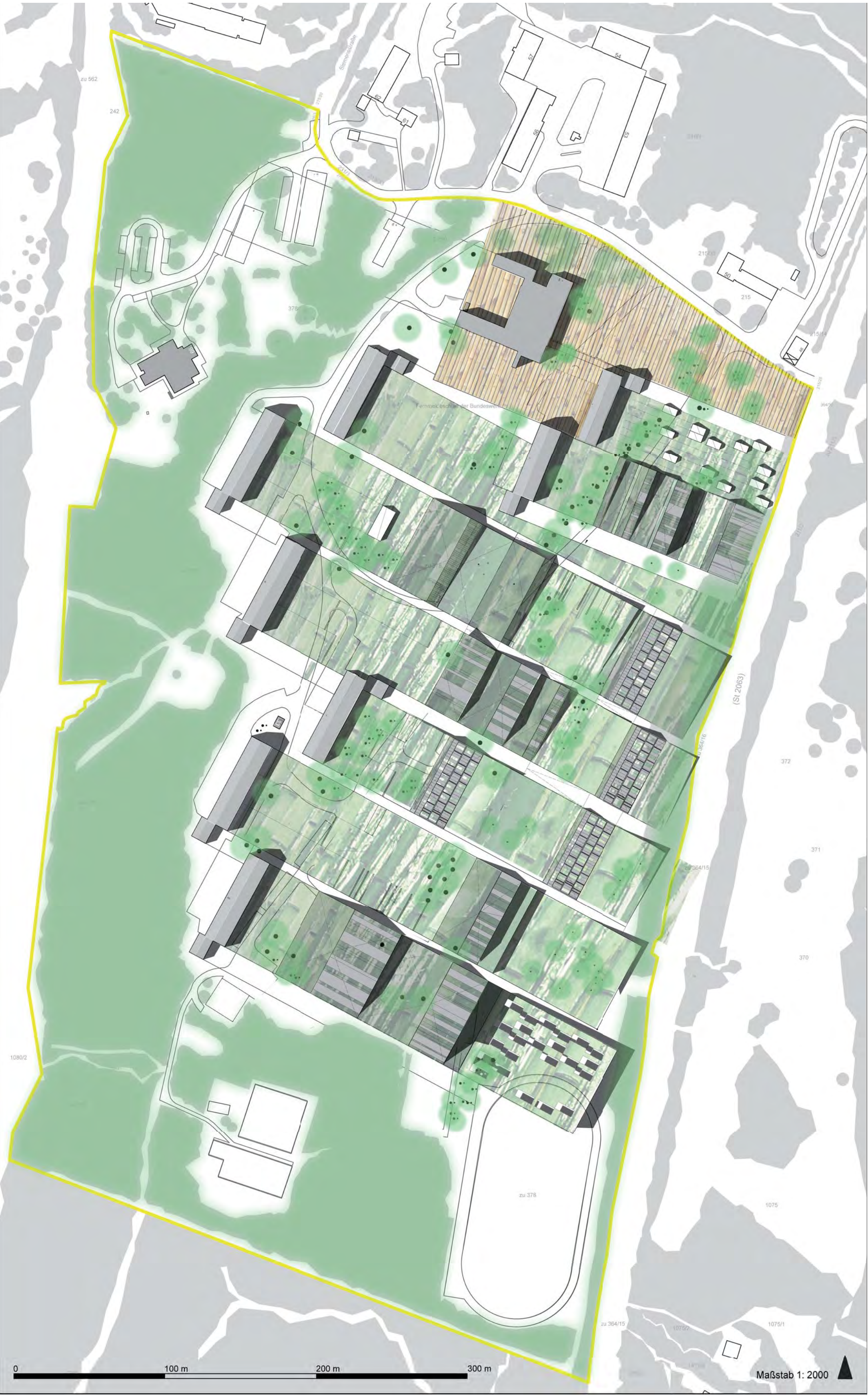
Cutting Carpet



Band-Strip Program:  
Park and Free Spaces



Folds System Program:  
Circulation and uses



Plot guides

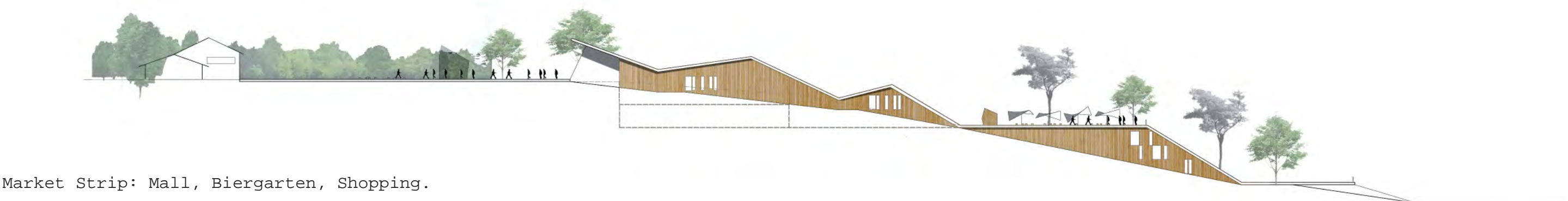
Building for activities involves a process in which we should think about who, was, when and where. When we practice an activity as jogging, swimming other painting we consume time in a type of architecture. This architecture should adapt within. So time and activity are related to architectural room. Every activity take a different time and space each other so we would need a system to put them together. We take the pulse from different activities in the complex. Activities as painting, social events and classes are short in timeline and a bit different to each other. They are all over the social strip and need different rooms. This strip is located in north side beside the New City Centrum ( a.k.a. the Canteen). We think that this stripe is used almost every day by citizens. So it works as nexus between city and new complex. When more we go to south, less architecture we find. The activities in south part are longer as the activities in north. Here we located the different wellness facilities such as Spa, hotel, gym, and swimming-pool. They are just beside the athletic courtyard. In south the pulse is slow as the architecture because we use take more time to use this facilities.



Social Strip: Workshops, Museum, Atelier, Educational rooms, Conference Hall, Adult Classes (cooking,...)



Educational Strip: School, Children care, Nursery.

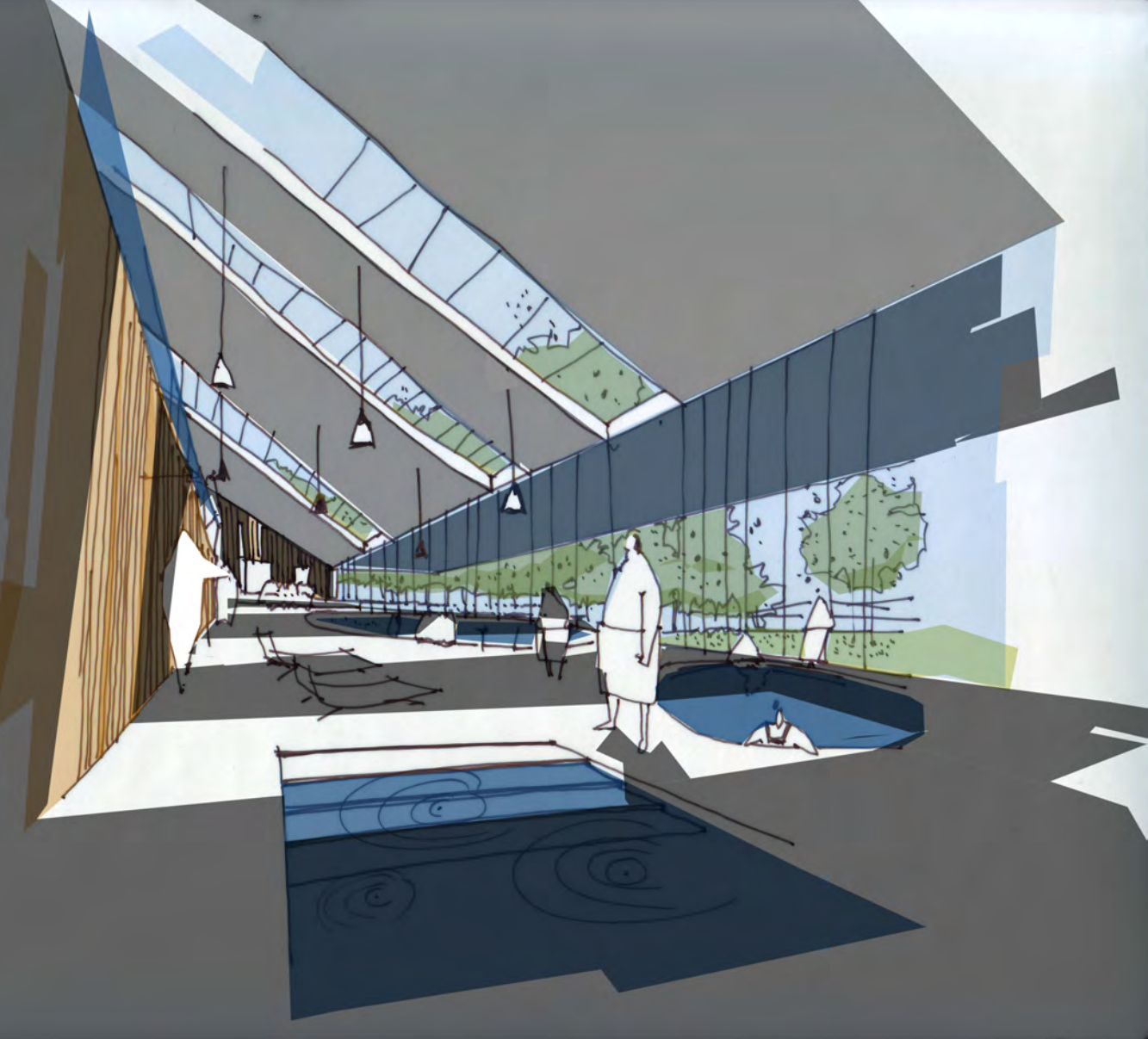


Market Strip: Mall, Biergarten, Shopping.



Sport Strip: Gym , Swimming-pool, Sport Facilities





Return to the questions

**the Forest:** Our proposal takes care of the Forest and we do not want to change the different locations of the trees in this location. Our architecture must be almost another type of forest, with shadows and tall trees. Our Folds must respect them and they should even allow a vegetable roof over them. And these roofs should be sustainable. That's the thing: Rainwater must be used in our architecture. WC, Laundry service, toilette, washing,...all this water come from rain and we could give a kind of system which filters this water for washing.

**Existing elements:** The Canteen could be newly refurbished. This building could have a hall for exhibitions. This use is related to the existing paintings and murals in it. It can also be used as concert hall, museum, or pavilion for multi uses. With a small intervention it could reach a good role in our proposal. It is the nexus between the city and the new area and is connected to a square in which all type of markets could be. Flea Market, Bookmarks, Handicraft Market,... all of this can be located in this place. The so called "Sturmblockhäuser" are the head of every strip. They should have a predominant use which defines the rest of uses on its band or strip. They should have administrative uses. For example, on the School strip, the Sturm Blockhaus should have administrative and municipal uses like offices and management. On the "sport strip" the same type of uses.

**Existing uses:** The Leisure and the existing uses are to be improved. We try to attract tourism with new uses in the zone: Spa, Hotels (low density), Sport facilities related to the lake and Golf, Bio-gastronomy, are our goals to get it. They are in connection between lake and Forest in the south of the site. Calm and stressless are the keys.

**Old language within new language:** The typical roof in this location provide us a chance to interpret it. We propose small echoes of the Landscape and the "Bayerische Architektur". Our folds can reach that form in a quiet mode, just in the limit of the existing Sturmblockhäuser. They are the directors of this plan.

**Landscape:** how could we the landscape integrate? We must activate all over the site with a bit of architecture and a lot of Landscape. The city and the citizens decide when and what to build in every moment. They could even choose how every fold is under need. The plot is all over the site. The Band system provide this plot to build, that it is related to the Sturmblockhäuser in dialogue with roof and proportions. it provides to the site a new park, new forest and even a new skyline but so similar als the old one. We use principles of Land-art but in an active mode. **Architecture should not transform this place but explain it.**