

BH819

Wernigerode (DE)

DUET

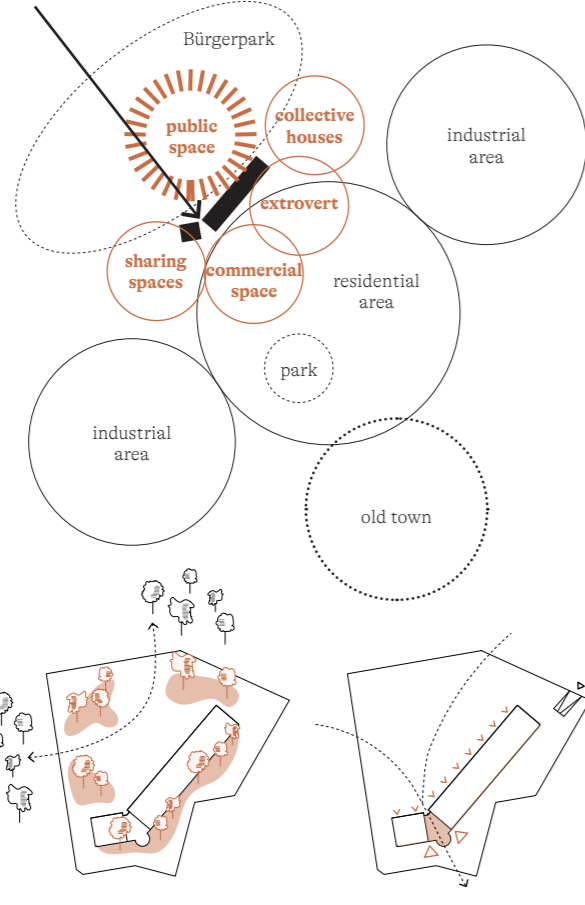
The development of northern site of the study area started from the decision to encourage a condition of high-density and collective living in relation with a specific morphologic condition. The building rejects a relation of proximity with the street and withdraws from the roundabout. The resulting public space acts as a buffer between the vehicular infrastructure and the residential house and marks a connection with the territorial system of voids of Bürgerpark.

The housing is a sequence of equal bays framed by thick walls containing all the fixed utilities (bathroom, kitchen, etc.). Apartment floor plans are modest, yet create a sense of spaciousness, due to their simple structure and two-sided orientation.

From the connecting walkway, apartments in the central portion of the building are entered directly. The level of privacy increases in the direction of the adjoining living area and bedrooms towards the park. Apartments in the crowning, instead, are organized on two levels and take advantage of a wider external private space.

The design offers a diverse number of accommodation types and includes classical family apartments as well as individual structures for elders and young users. The rhythmicity of structure and space allows further collegial partitioning of the bays if needed. Secondary partitions can be built or disassembled so apartments can grow or shrink according to the different needs of the inhabitants. The apartments are supplemented by central communal spaces and a set of lively commercial/public slots at the ground floor.

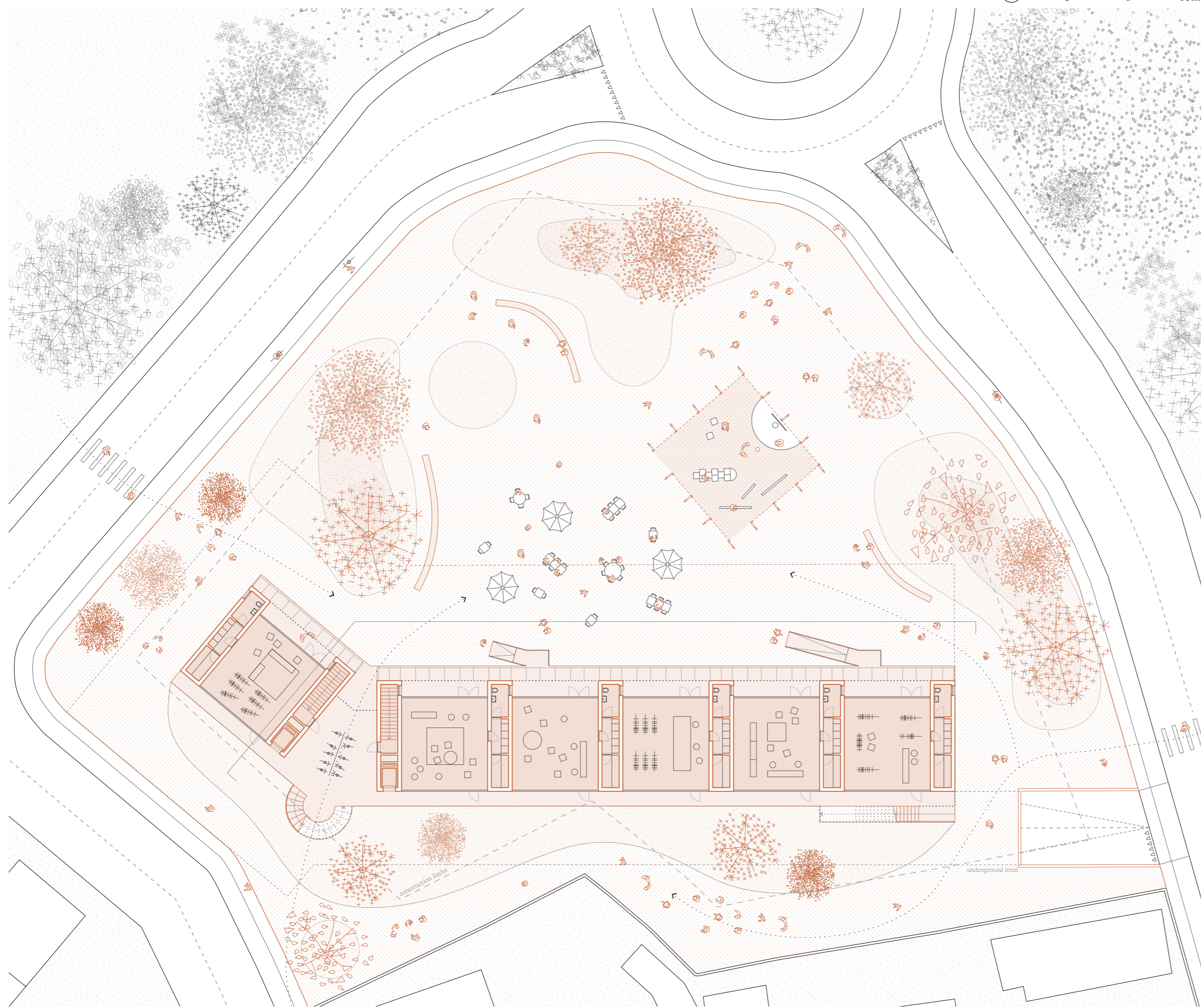
The material selection of the building is oriented towards efficiency in construction. The whole building, except for the ground floor bays (in situ concrete) consists of prefabricated elements.



Greenery Entrances



Level 0

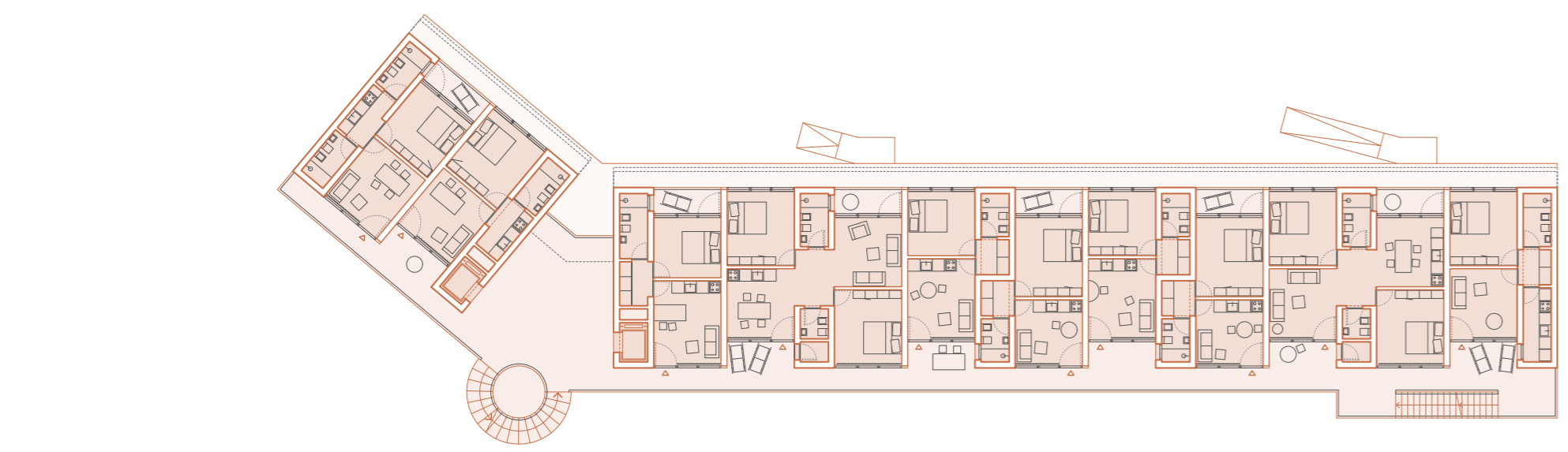
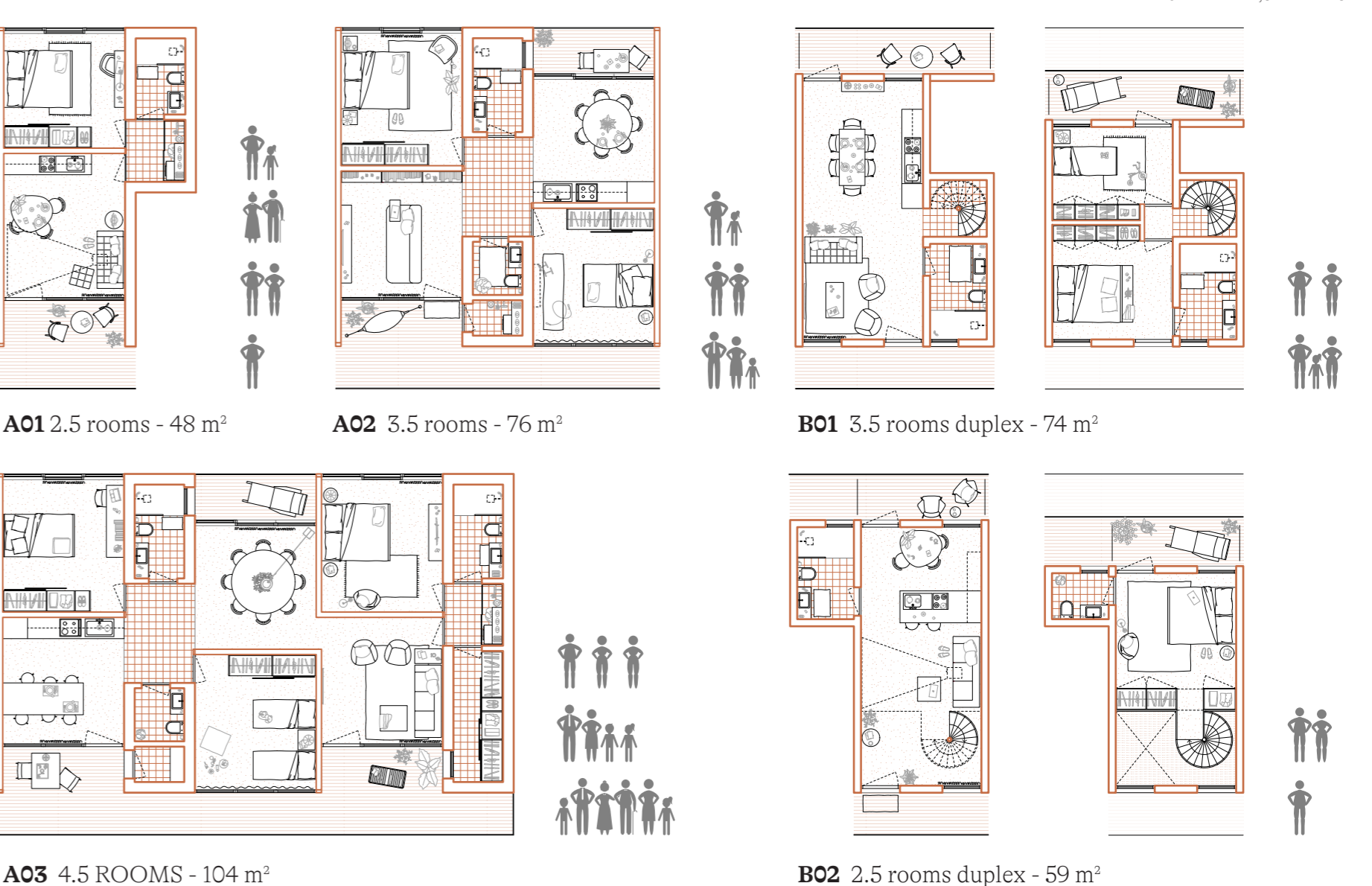


Level +1

Residential units arrangement



Typologies



Section AA'

