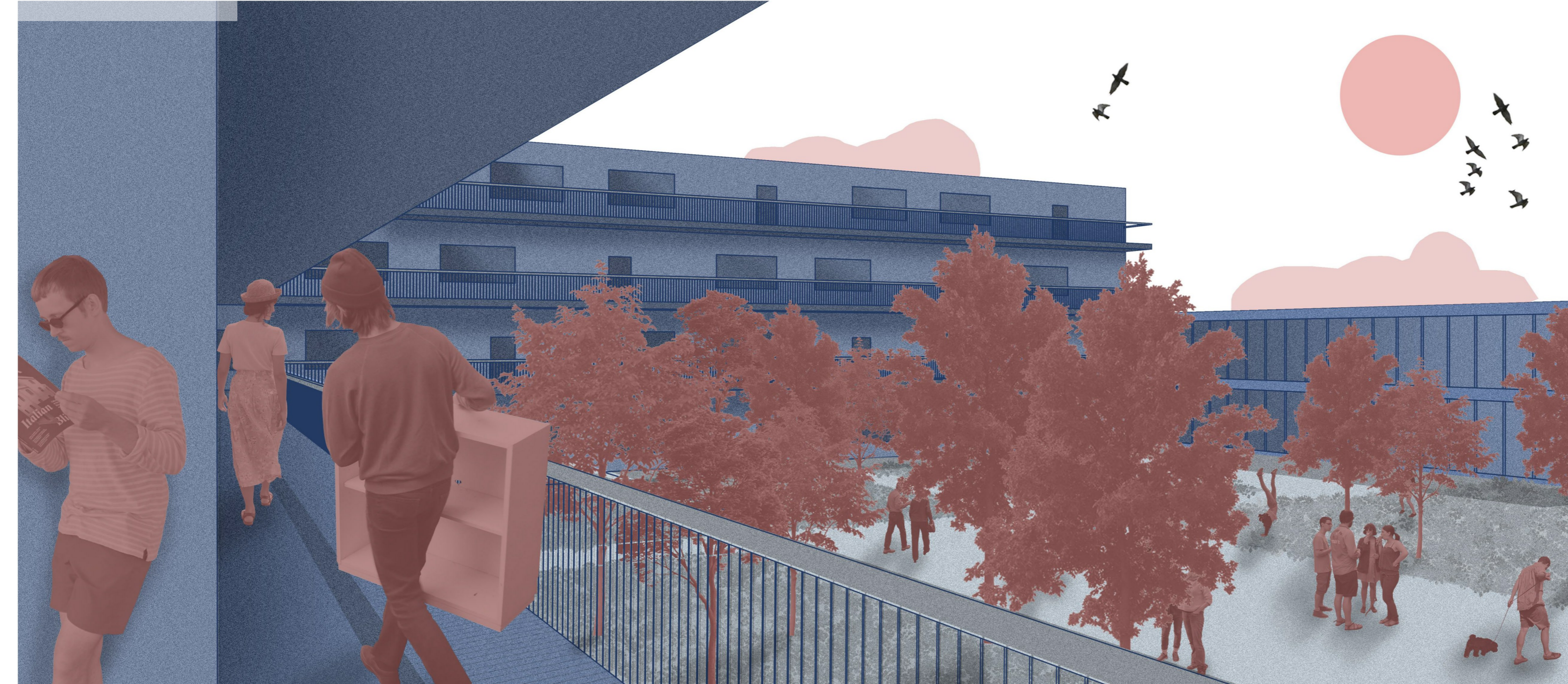
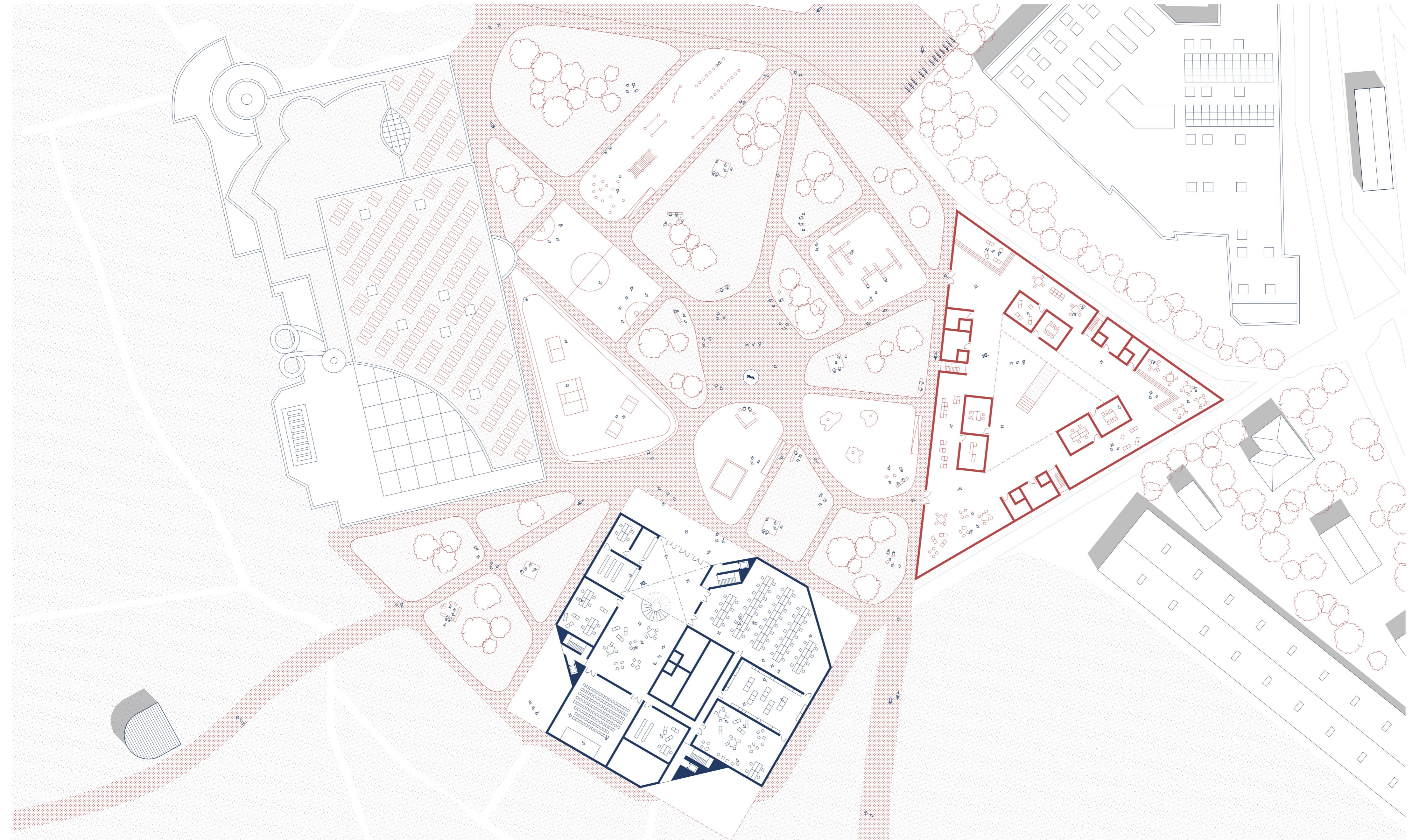


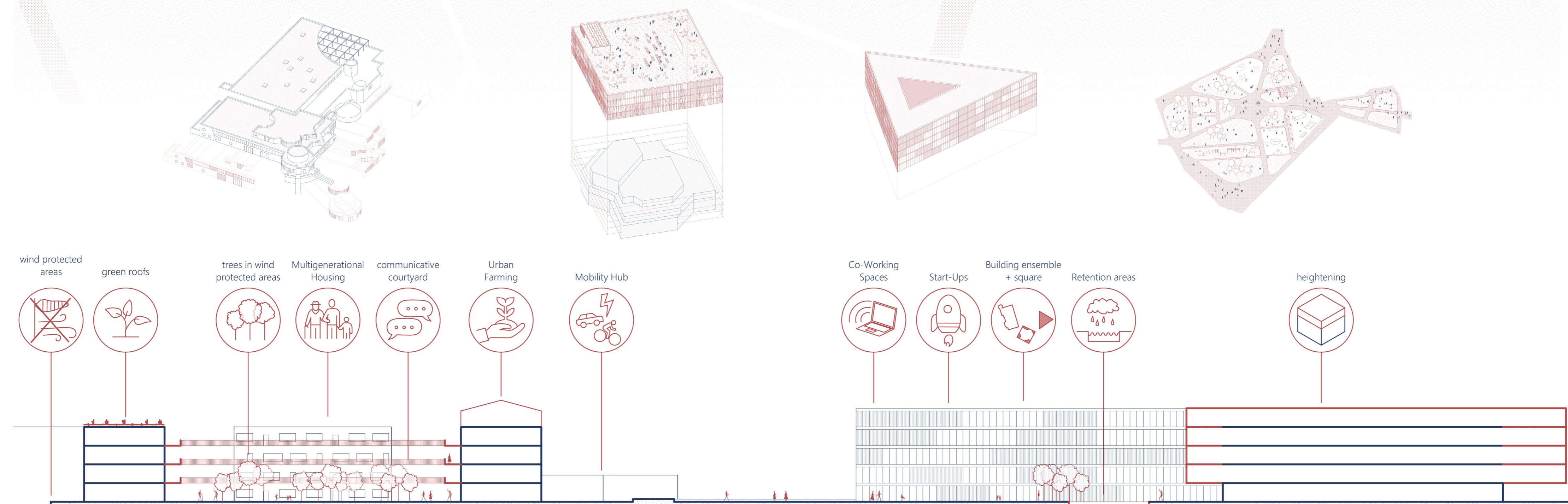
The circular route leading through the Kurviertel is intended to unite the quarter, with the high points at the ends acting as a closing of the quarter. It is supplemented by the themed streets "Market", "Gastronomy" and "Rest", which carry their theme through the quarter into the city center of Borkum and thus create a connection to it. The end point of each of the connecting streets is the old lighthouse or the island schools, which are connected to the new center, especially the House of Education, by this measure. On the coast side, the themed streets will be extended to form footbridges, which will not only provide a different view on Borkum through buildings built into the sea, but also create attractive meeting points. The Kulturinsel will be visually adapted to the new square design by means of a new, built-on structure, while at the same time retaining the existing structure on the ground floor and in the interior and presenting it to the outside through the partly transparent facade. The uses include a cinema and a library in addition to event spaces and common areas which should be used as meeting areas for the Island population, especially in times of bad weather. The "Gezeitenbad" remains in its form and will only be energetically renovated and equipped with new windows in the style of the innovation center and the Kulturinsel, so that a consistent ensemble is created, which still shows the existing cubatures. The square will be designed park-like and supplemented by uses matching the adjacent buildings. Through specific, careful additions and modifications to the existing buildings, NEW PERSPECTIVES will be created on and for a Kurviertel that continues to be recognizable but is more focused on the population.



COURTYARD OF "GENERATION HOUSE"



FLOOR PLAN, M 1:500



SECTION, M 1:500