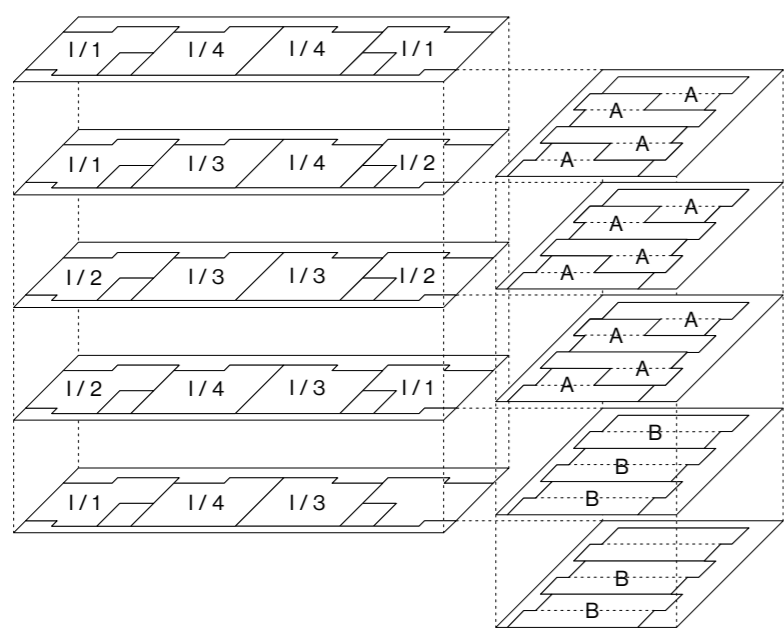
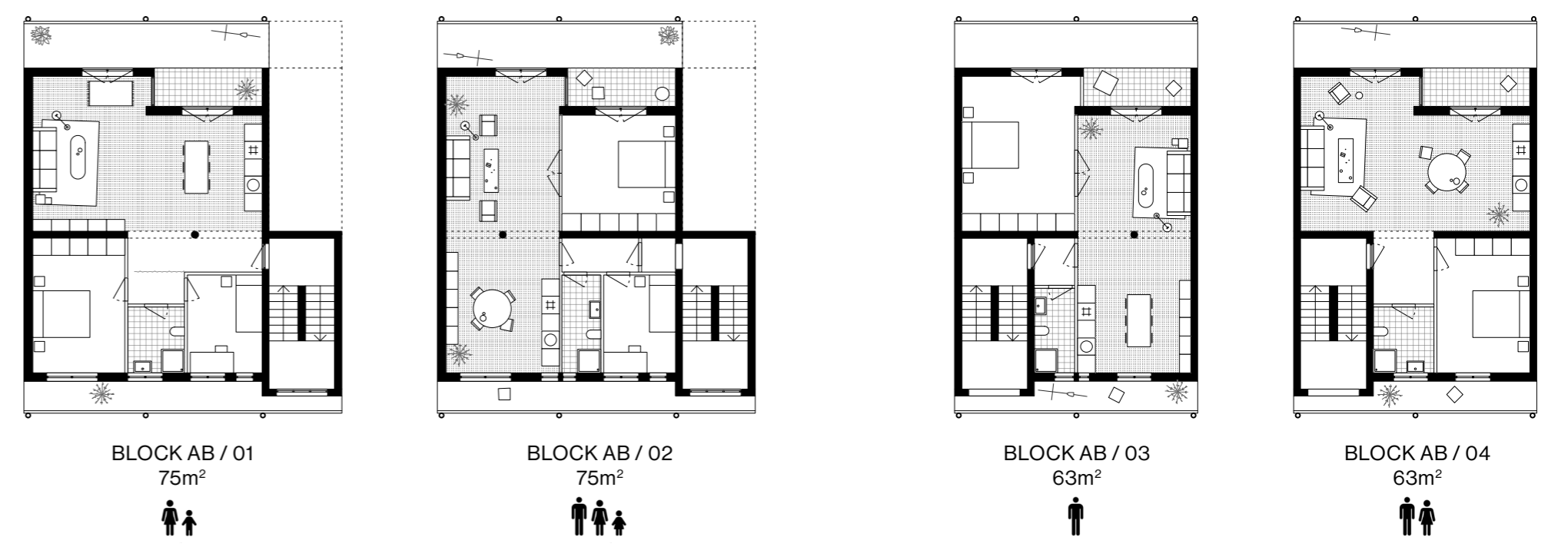
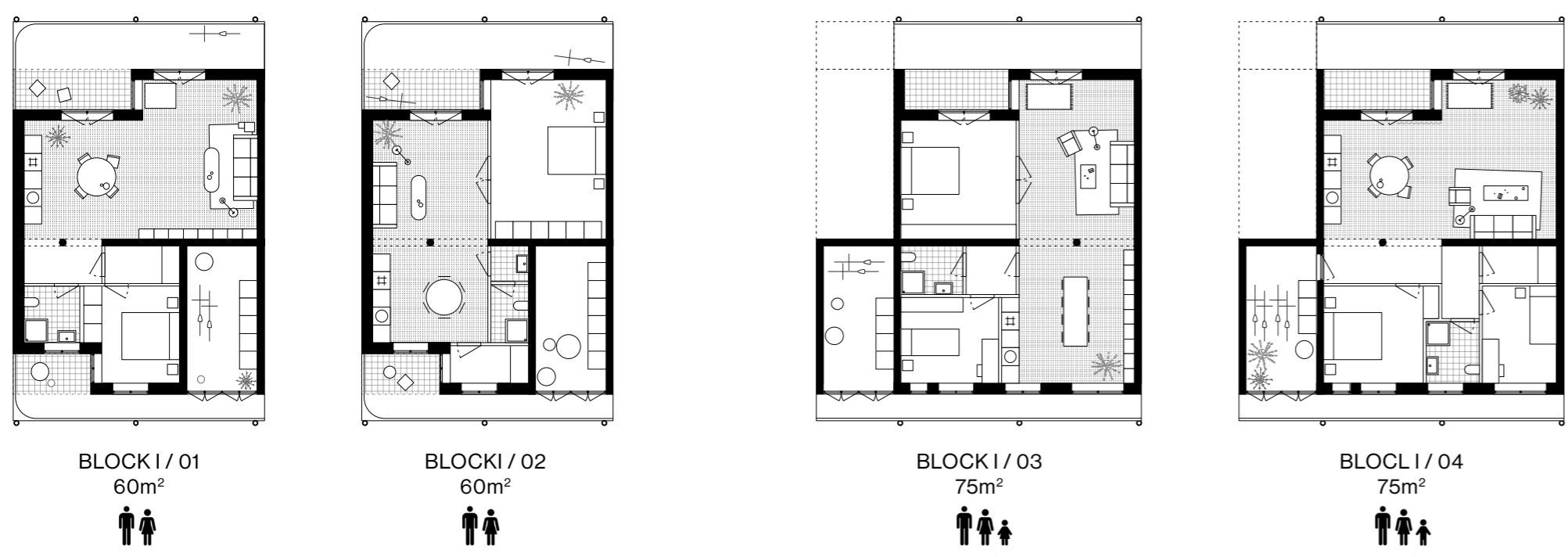
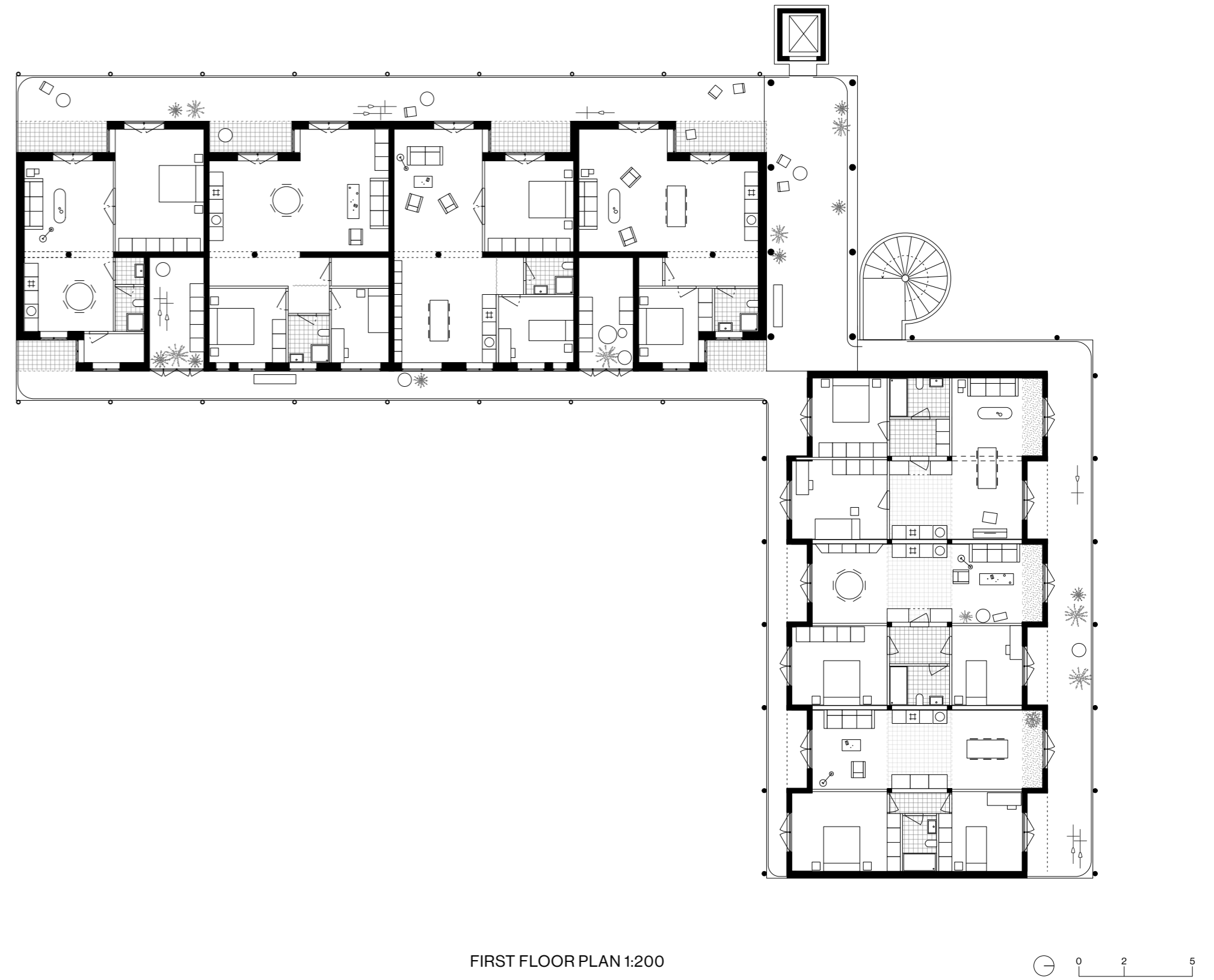
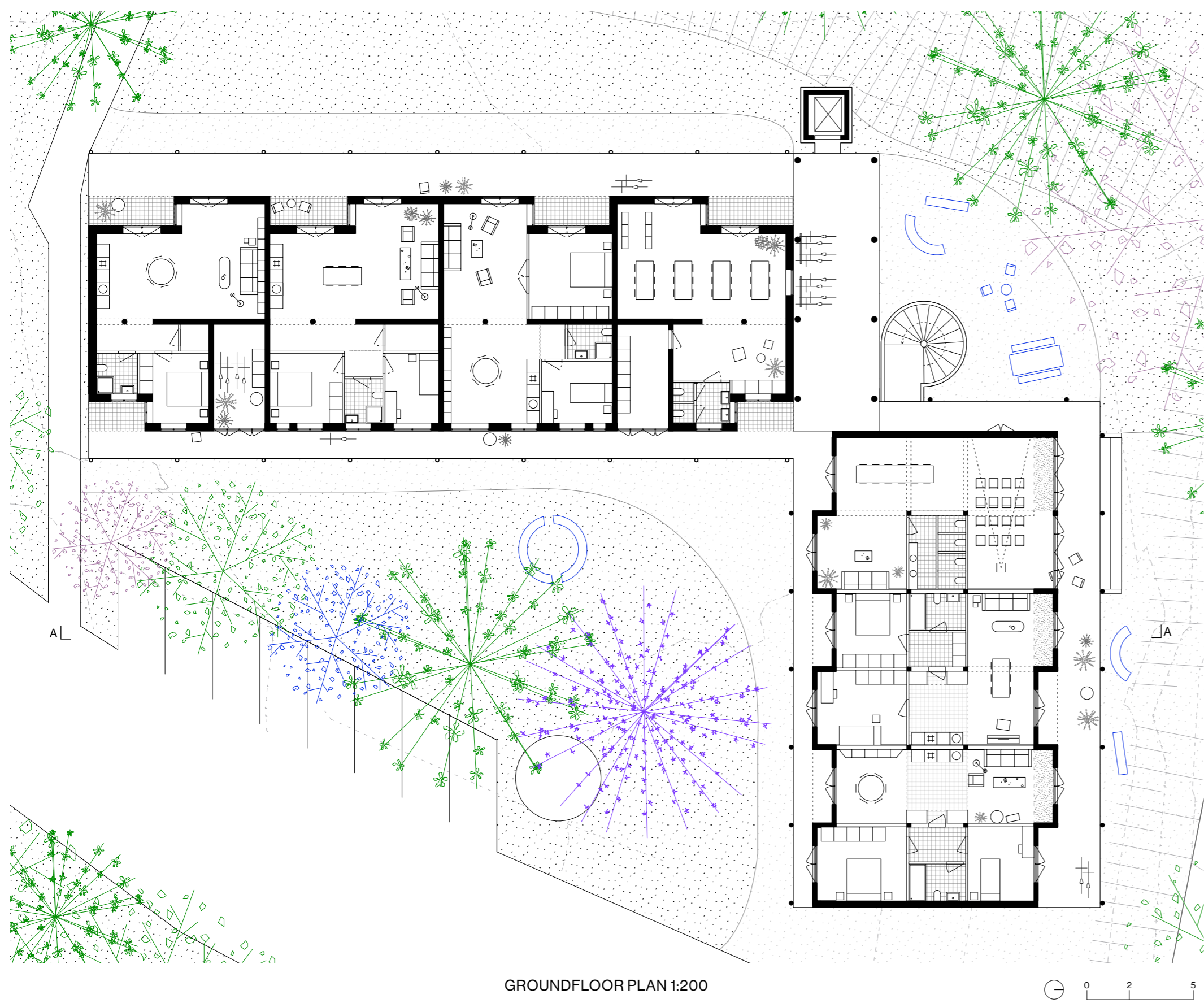
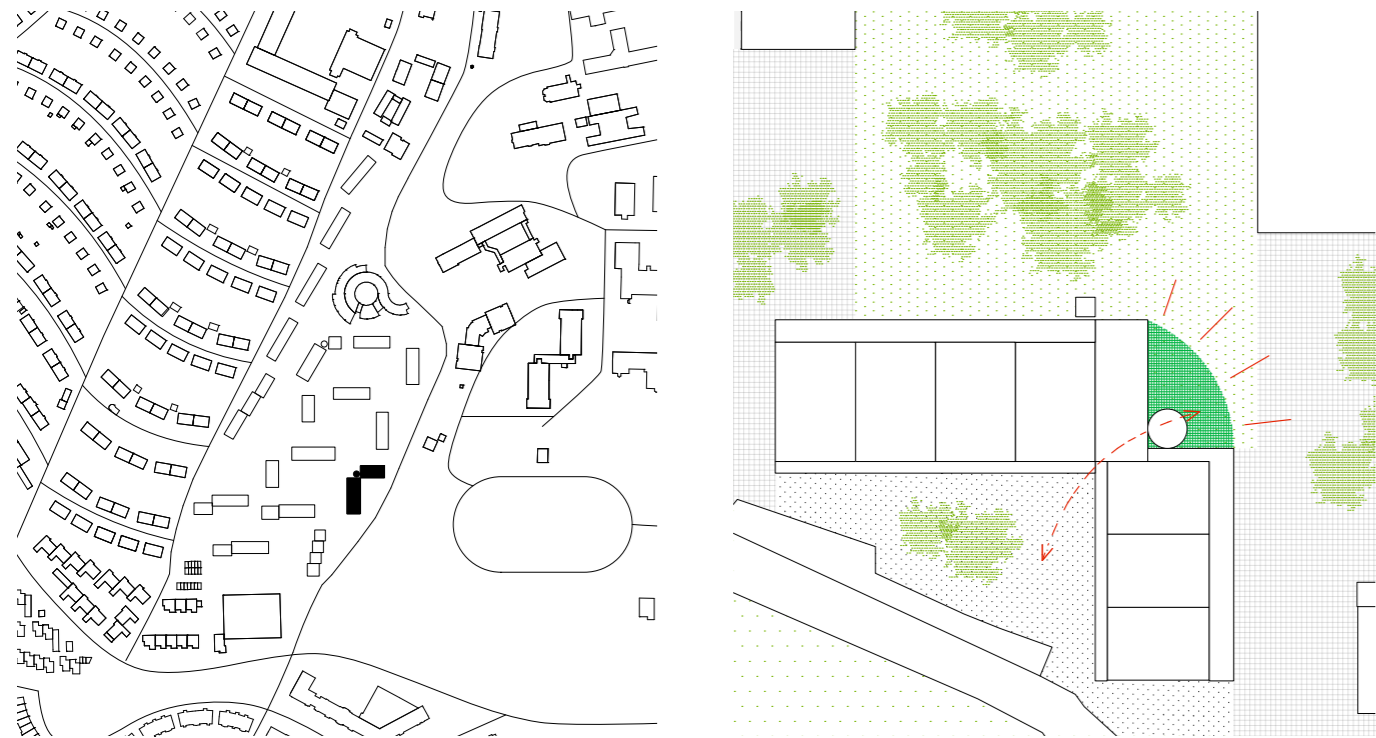


The strategy for the reuse of existing buildings starts with a careful observation of the available resources. By adding decks to the facade, the buildings relate to the courtyards in a new way. But it also has an additional effect: it reverses the logic of the building, introducing a new system of collective circulation. In here, the existing balconies become niches with a degree of privacy. The existing staircases are removed and transformed into collective storage rooms at each floor. Internally, a simple demolition makes it possible to generate an unexpected spaciousness in the layout of the units. For both the 2 and 3 rooms typologies, it is possible to arrange the unit transversally - with living rooms that run from facade to facade - or horizontally - defining a day and night areas. In all cases, the posi-

tioning of all fixed utilities (bathrooms, kitchen, etc) respects the existing wet cores. The extension aims to introduce a moderate densification of the plot through a simple and urban volume that completes the missing side of the courtyard. The design offers a diverse number of accommodation types with a focus on smaller units - mainly of 55m² - for young tenants and couples. This building accommodates 20 units distributed on 5 floors and a larger public function that hosts a kindergarten for the area. A wide platform acts as a connecting element between existing and extension, an open air terrace where collective moments can take place at each floor and where bikes can be stored.



10/10A	5 x TYPE 1 / 1	300m ²	2325m ²
	4 x TYPE 1 / 2	240m ²	
	5 x TYPE 1 / 3	375m ²	
	5 x TYPE 1 / 4	375m ²	
	5 x TYPE B	375m ²	
EXTENSION	12 x TYPE A	660m ²	245m ²
	STORAGE	110m ²	
	COLLECTIVE	135m ²	

