

NA893

an X-ray of our Societies

Our cities defined from the spaces where we live in. Both domestic and urban realms are the spatialization of our societies, of their citizens' lives and of their social behavior.

This proposal establishes a series of different Typologies of apartments that correspond to different models of users and groups of users. Each Typology materializes social features by means of architectural conditions: double floors with double entrance for independence, common spaces for socializing and sharing, bathrooms that become circulations, kitchens that behave as living rooms, etc. Those architectural conditions have been arranged in various combinations in order to achieve a contemporary, complex and real model for our societies requirements. And also for the upcoming needs, for those future situations that cannot be predicted but for which we can provide tools for adaptation.

For that purpose, we have worked with Models of users. Both these Models of Users and the Architectural Typology that corresponds them are not just defined in terms of quantities (number of users, age range, square meters, number of specific rooms, services, etc) but in terms of conditions and qualities that define them as citizens of our society. For example, such a Qualification of our Users would establish different models according to the grade labor stability, to the grade of compromise of a partnership, to the grade of independence within a family, or even to the possibility of growth or shrink of a family. The qualities of these groups of users are the ones that construct the daily bases that establish the rules for the definition of our urban and domestic realms.

the Carpet

FROM DISPERSION TO CONGESTION

It solves this dichotomy though a very basic architectural operation: whereas the traditional semi-rural villa of the garden city works in plan (a patio or garden is confronting a home) the carpet villa works in section (the garden does not confront the home anymore, but it's the home that is elevated over a commonly shares patio that extends its public ethos to the site and neighbor)

HOME VS. LABOR VS. LEISURE

In the contemporary city, Home and Labor are not anymore opposed realms but merged realities. They are just radicalized terms of a much more blurred reality. Work has been merged with domestic activities as well as domesticity has been released from the home in order to take place within labor spaces.

That primary division of labor space and domestic space that sustained the triumph of modernity during decades has been dismantled by the subsequent releases of the personal computer, the world wide web and the smartphone, among others. The technologies that those devices and systems involve have constructed a change in the medium by which publicness is constructed in the contemporary society.

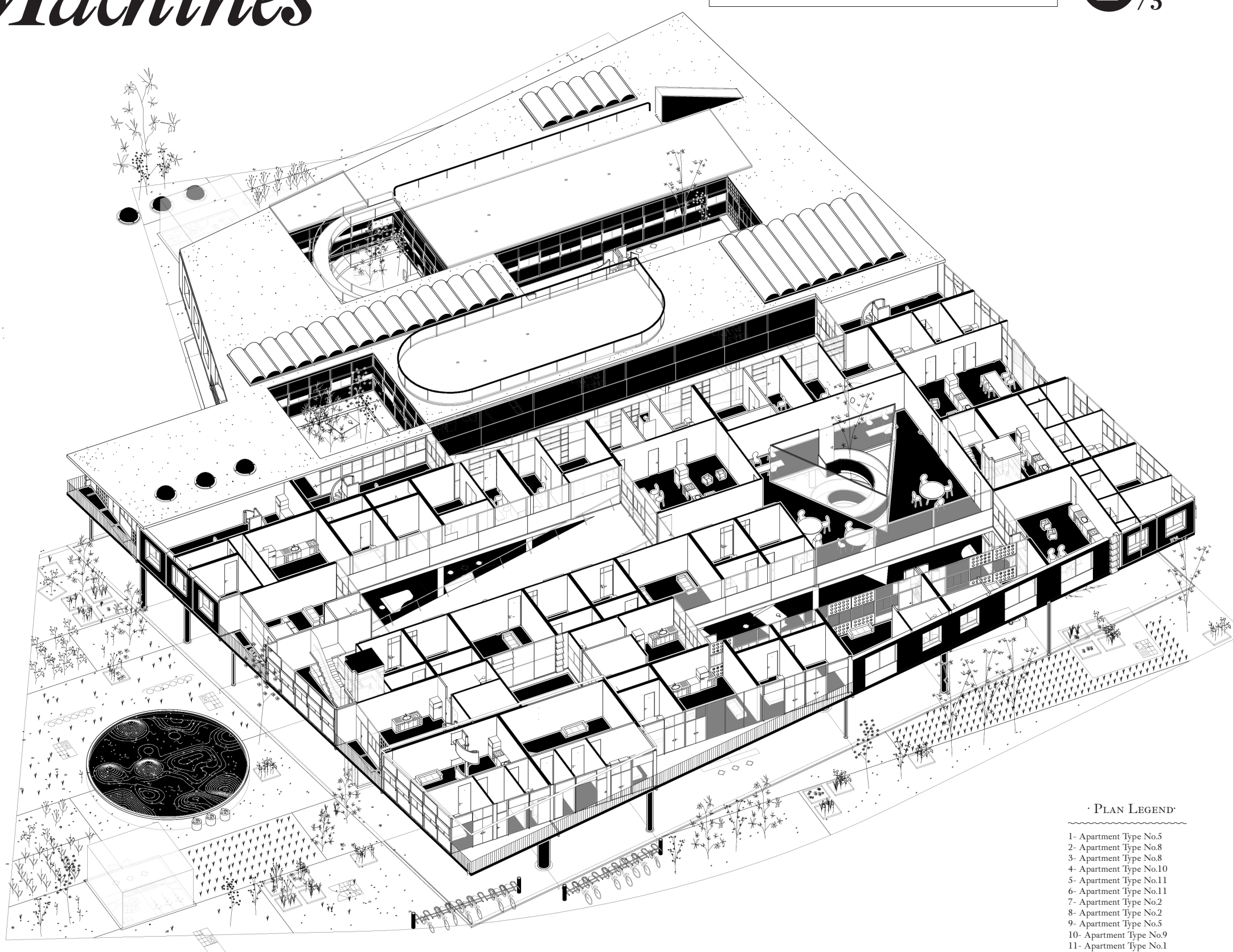
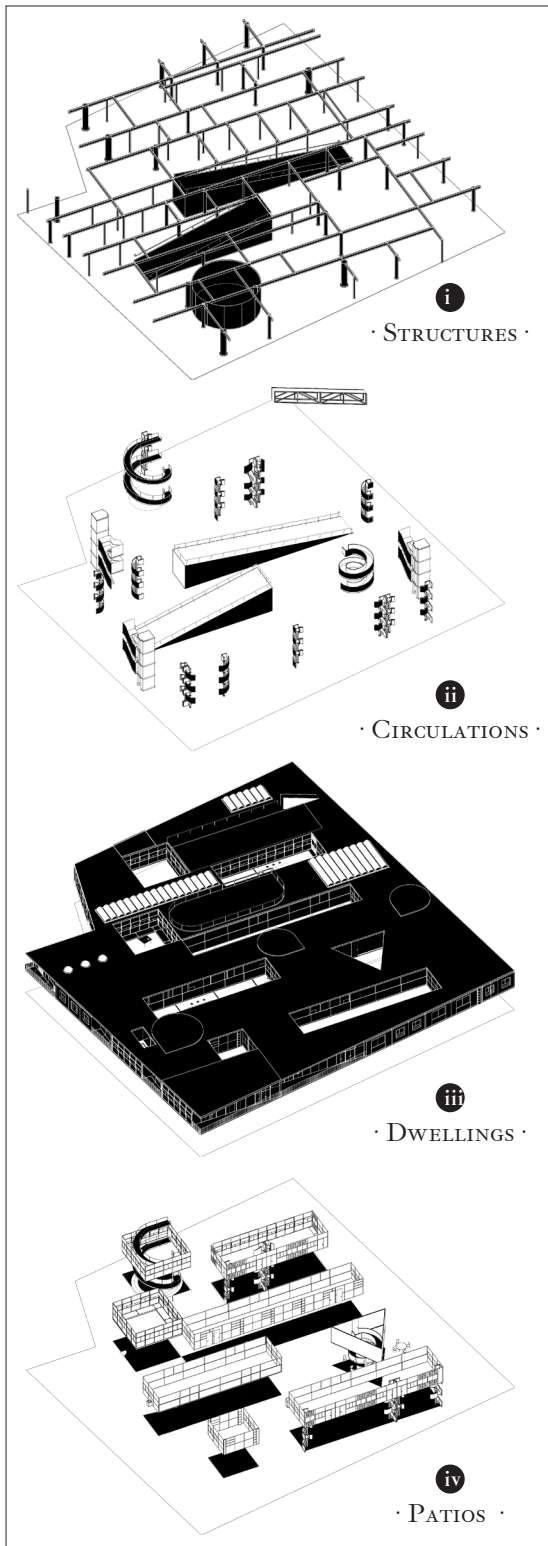
While work and home have been opposite spheres in the modern life, in the contemporary city, digital technologies have generated a medium that constantly mediates between both, establishing much more complex situations and conditions where new publicness is achieved and performed.

Labor is not anymore developed uniquely within work spaces. As consequence, domesticity is not anymore solely rendered within the home, nor urbanism is exclusively developed in the streets. Both of them have escaped the restricted boundaries that Modernity gave them in order to define a whole series of in-between spaces that are shaping the economical, political and cultural spheres of our societies.

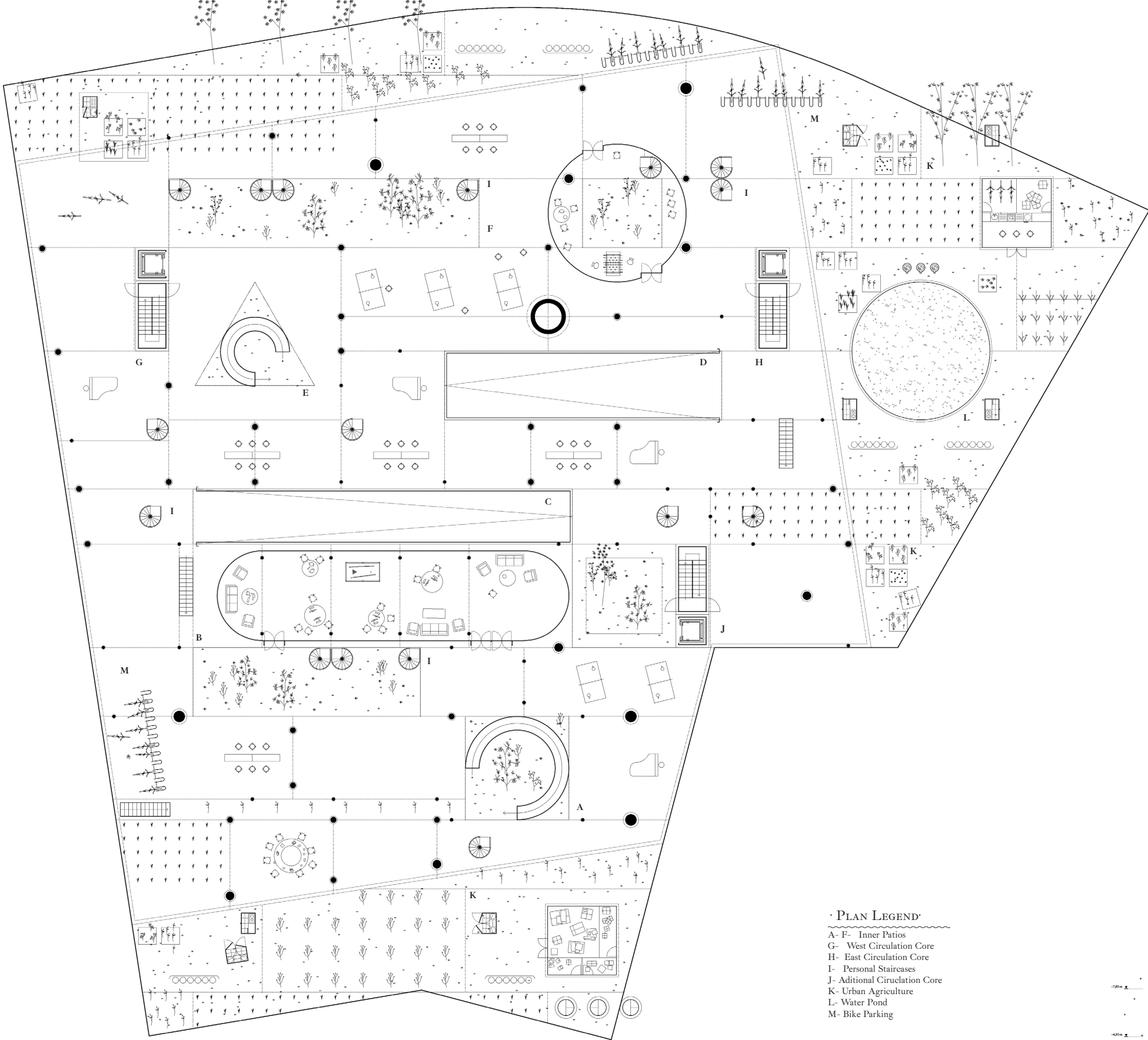
Domestic Machines

TYPE 1: THE CARPET

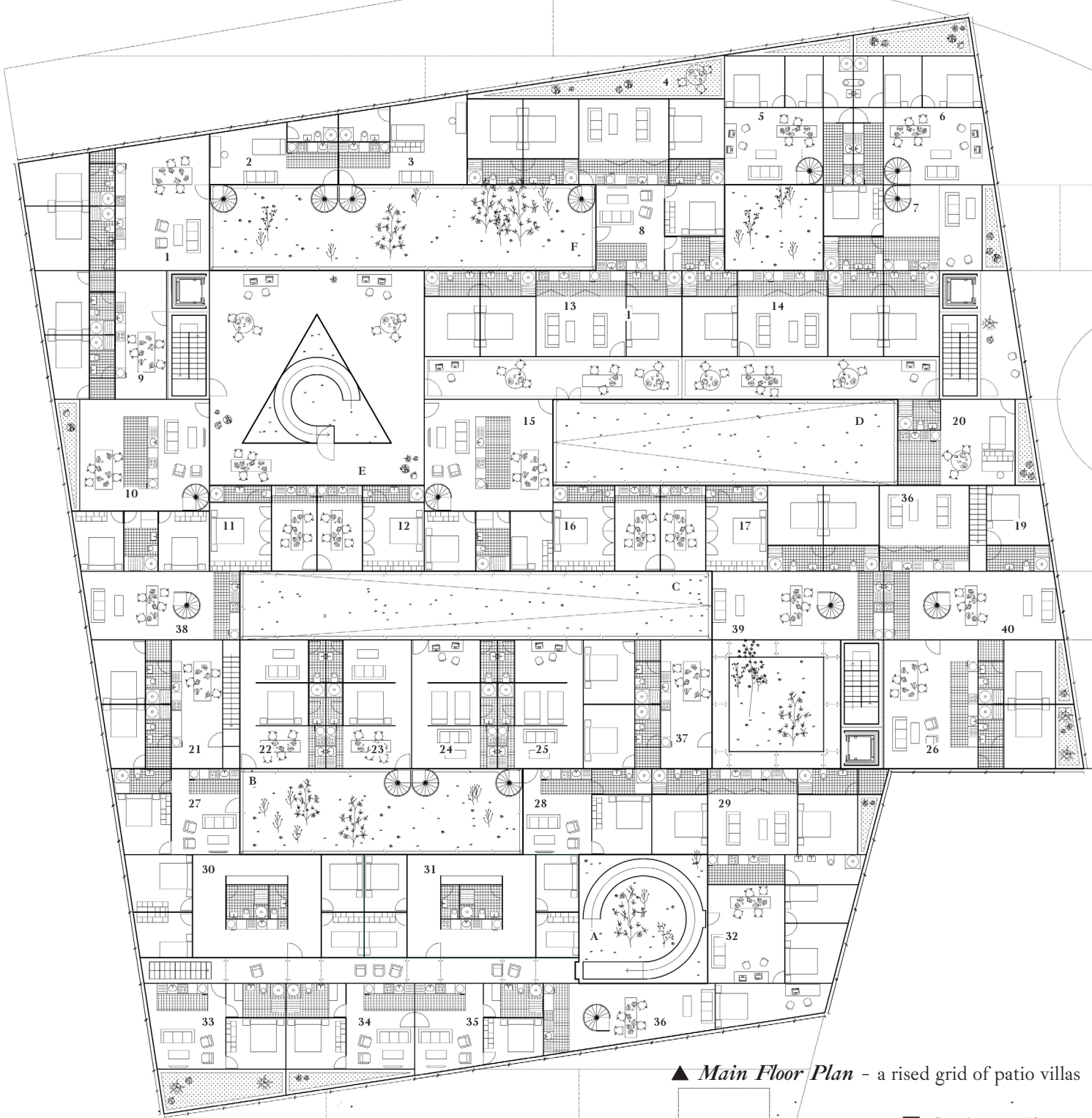
2/3



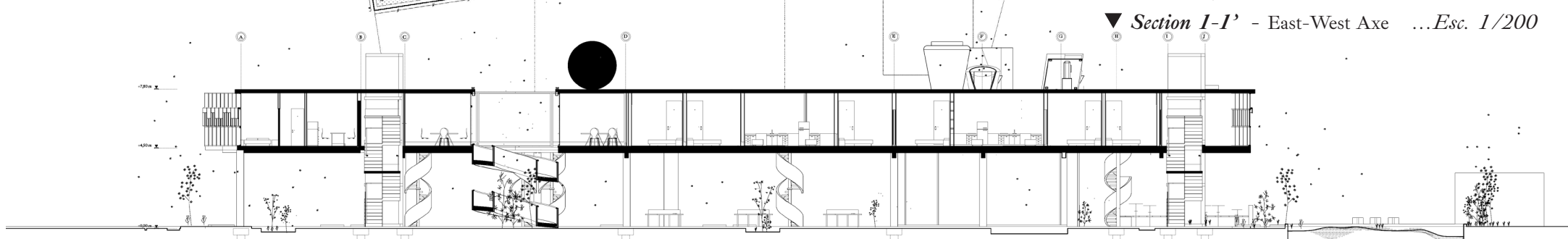
▲ Axonometric View -from South West ...Esc. 1/300



▲ Ground Floor Plan - a Public Plaza under the Dwellings · LEVEL +0,00 ...Esc. 1/300



▲ Main Floor Plan - a raised grid of patio villas · LEVEL +4,50 ...Esc. 1/300



▼ Section 1-1' - East-West Axis ...Esc. 1/200

