

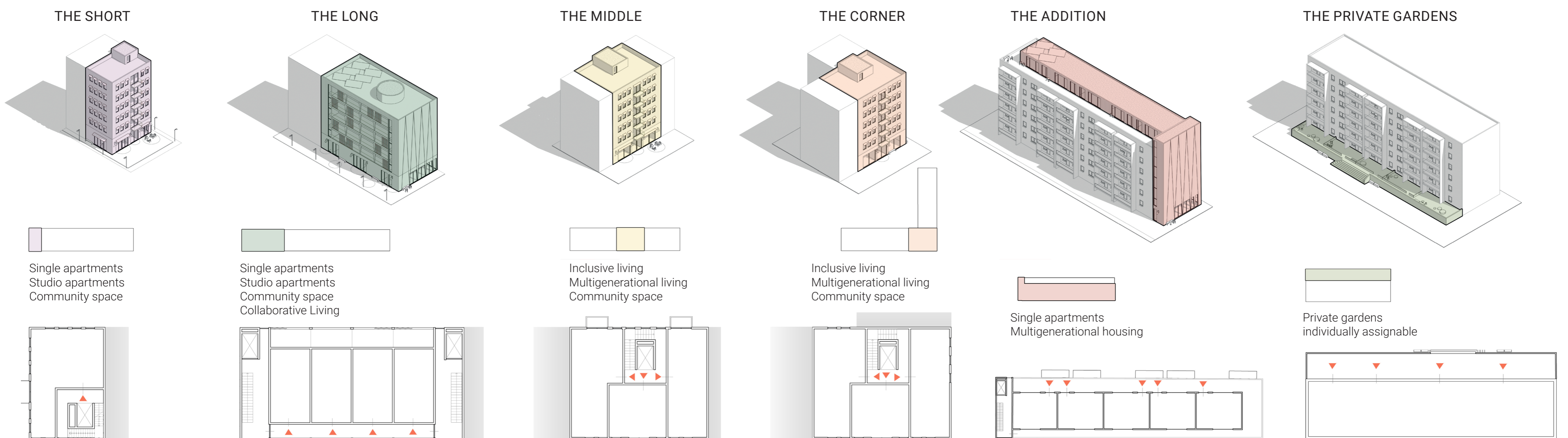
FRAMEWORK PLAN 1.2000

OPEN SPACES
The design of Residential Complex 7 Grünau revolves around four types of open spaces:
Private Green - Residential Gardens & Courtyards: These areas prioritize residents' privacy and relaxation, featuring individually designed gardens and communal courtyards that encourage neighborly interactions.
Public Green - Parks and Green Areas: Designed as meeting points for the community, these spaces offer opportunities for social interactions, play, and relaxation. They include playgrounds, seating areas, and team sports facilities.

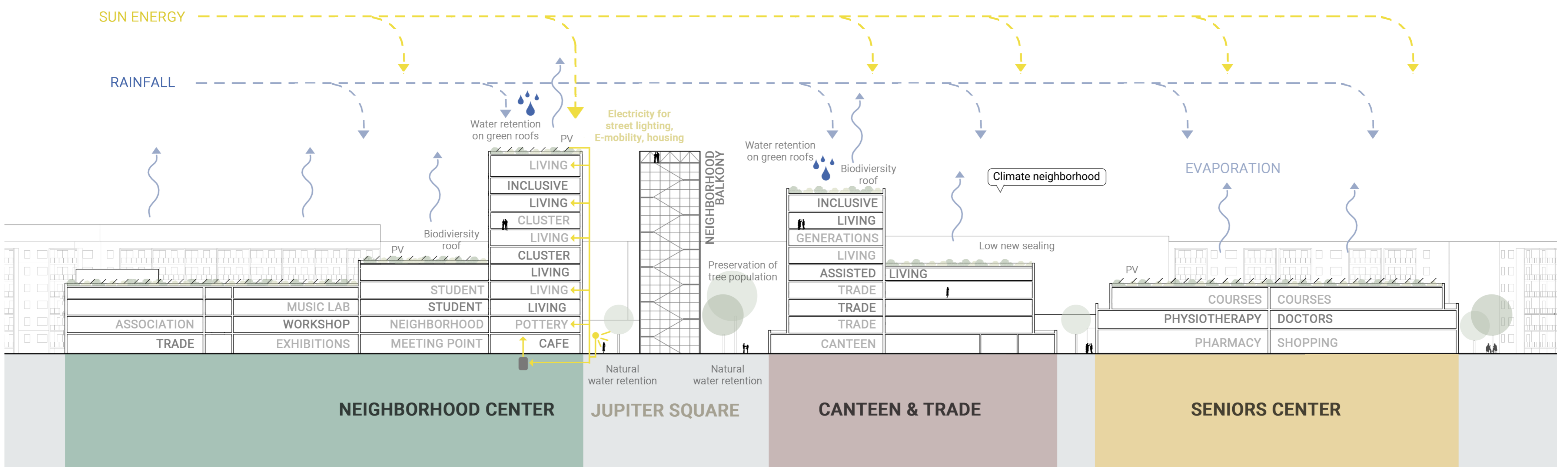
Active Green - Sports and Exercise Areas: Providing spaces for physical activity, such as sports fields, running paths, and outdoor fitness equipment, to promote an active and healthy lifestyle.
Urban Green - Town Squares and Promenades: These vibrant public spaces, adorned with benches, greenery, and art installations, foster social life and community gatherings.

To achieve sustainability, the mobility concept includes:
• Mobility Hubs: Options for car-sharing, bike rentals, and public transportation, with individual car parking space
• Expansion of the neighborhood bus line for efficient commuting
• Strengthening Car-Sharing services and installing charging stations.
• Introducing a bike-sharing program with repair stations
• Creating a new bicycle highway

This shift towards sustainable mobility aims to promote walking and cycling, reduce car traffic, and increase green spaces with trees, green rooftops, and facades, while implementing effective rainwater management. The vision is to create versatile and welcoming public spaces that facilitate movement and social interactions, aligning with the „Sponge City Leipzig“ concept. Community engagement through local events and initiatives further enhances the sense of community, establishing Residential Complex 7 Grünau as a model for future environmentally-conscious urban developments, ultimately improving the residents' overall quality of life.



TYPOLOGIES EXTENSION



LONGITUDINAL SECTION 1.500