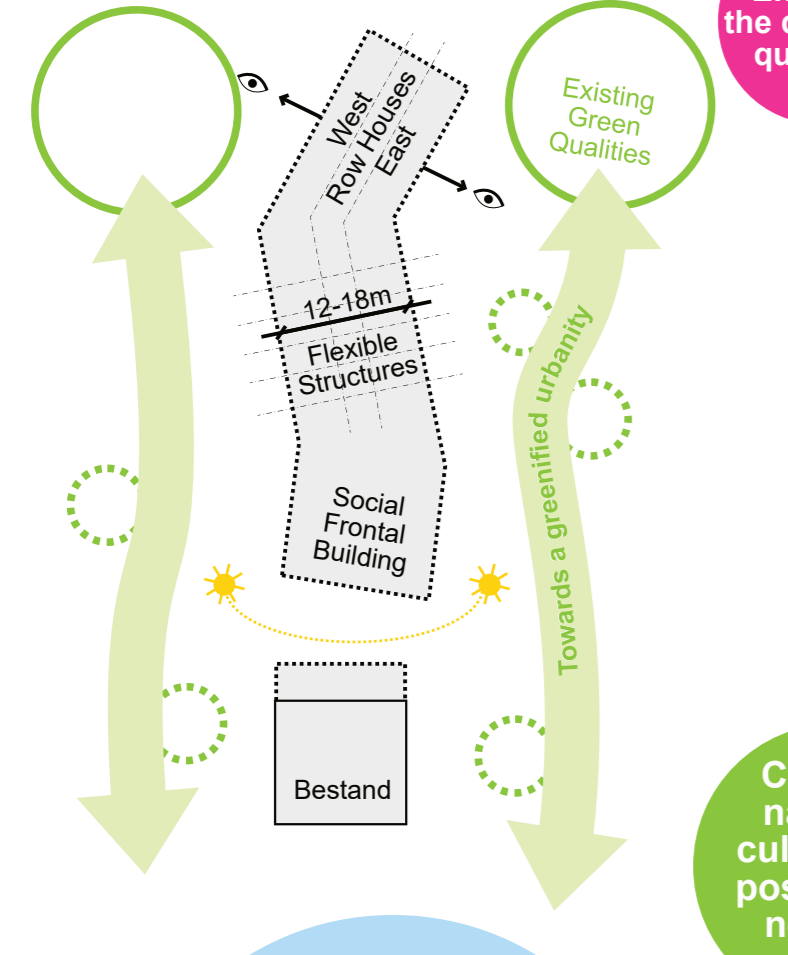


rewiring female* space (re-)production + privacy

safe public spaces

Proper lighting, visible ways and community engagement by architectural setups that forge social control reduce gender-based violence and harassment in public spaces. The urban perception of women is very different to men. Planning accordingly will allow everyone to move freely and participate in city life without fear.

Enhance the district's qualities



Connect nature + culture in a post binary network

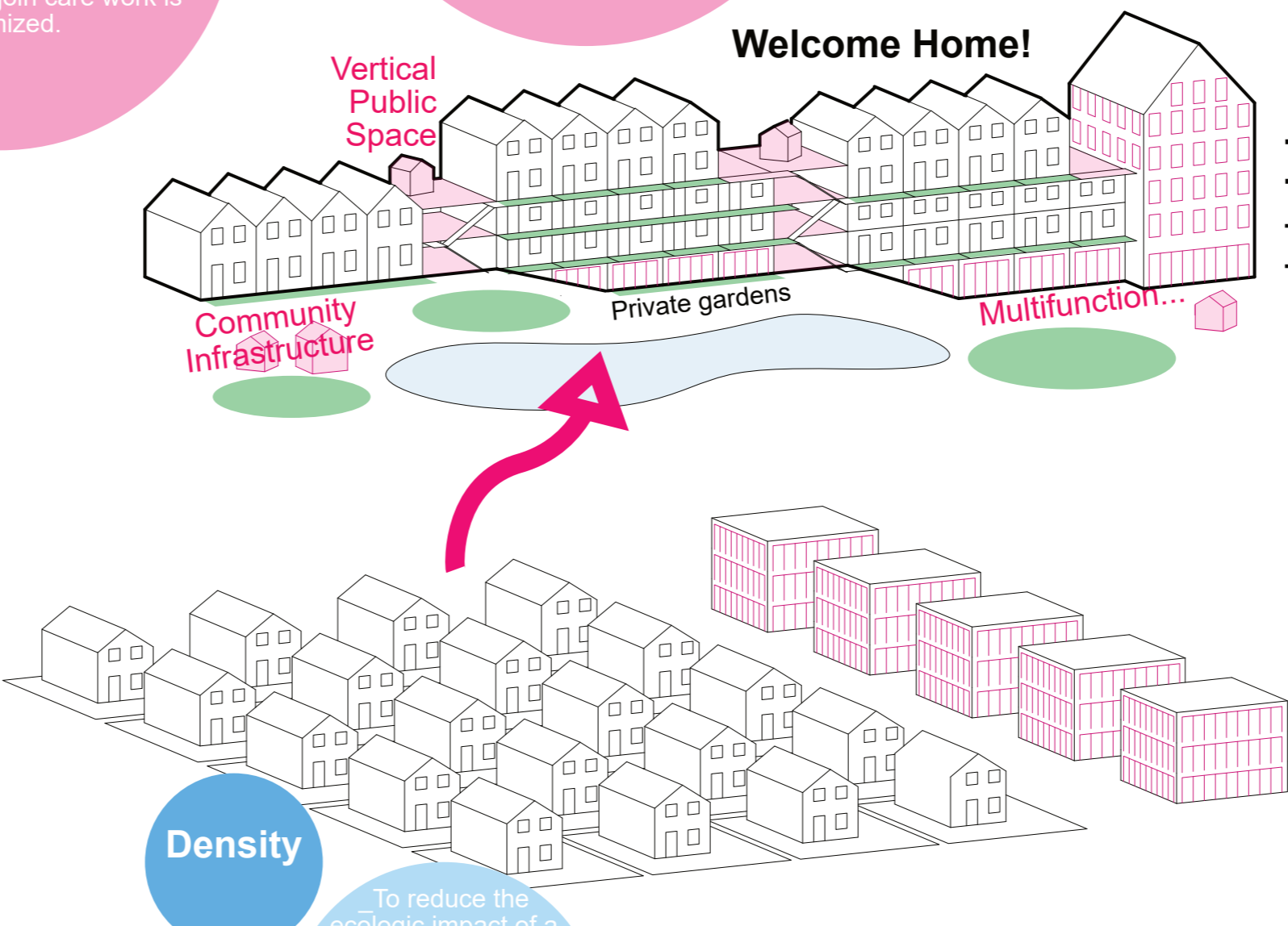
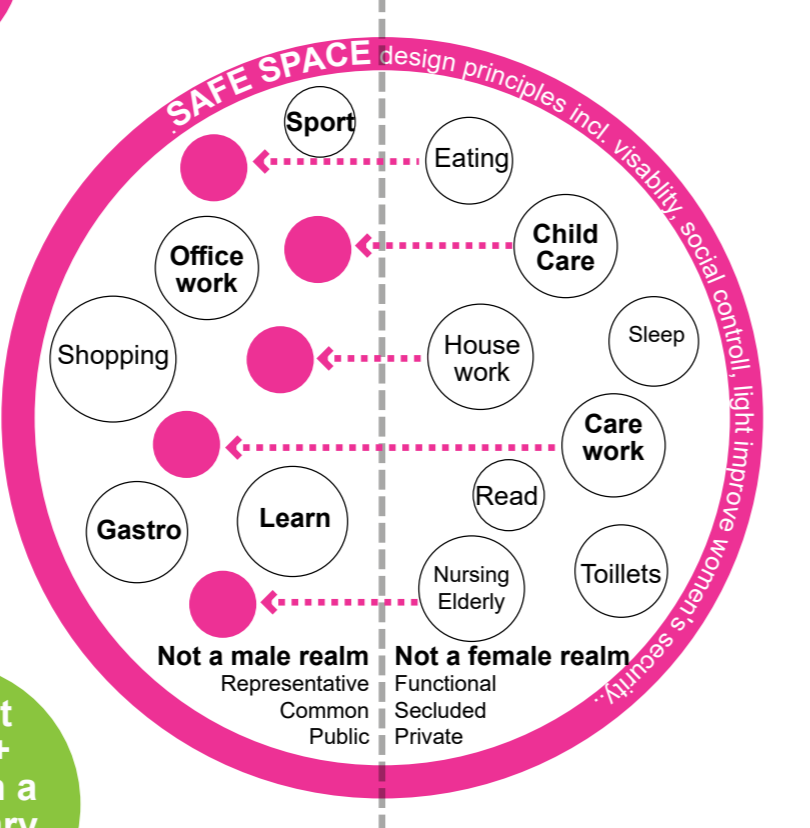
Care work and reproduction work mostly done by women were typically located in secluded, simple architectural containers. We want to make this part of work visible, places it at the representative focal points of social life. Thereby care work can socialize, get a word in the public say and the threshold for everyone to join care work is minimized.

What is a family?
The classical model of the nuclear family (father, mother, child) exists, just like many many other lifestyles and patch work situations and single parents. A compact city with spaces for the Nucleus will also enrich the extended family. Therefor ever changing lifestyles and family relationships can be buffered with a wider social network: The extend families will help individual and societal resilience and improve family life.

Extended families + common good

enhancing the inhabited milieu

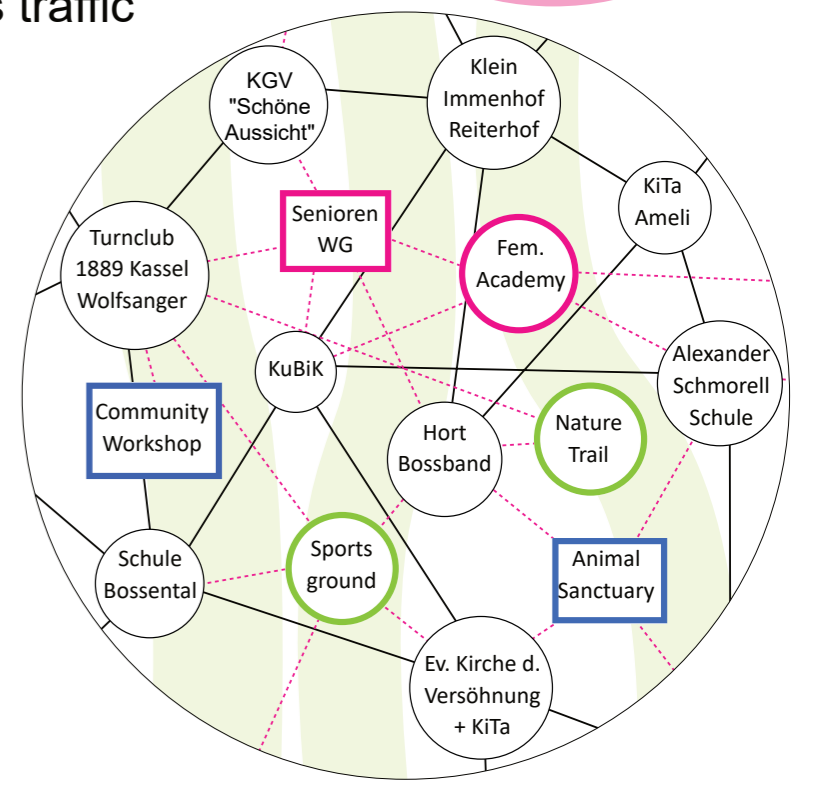
Wolfanger/Hasenhecke has a complex history, social urban and ecological structure. Based on the workshops process as proposed in the timeline, common development goals can be formulated to guide the programming of the new sexy neighbourhood. New functions and feministic ideas will enrich the inhabited milieu' urban network and develop new forms of symbiosis.



Density

To reduce the ecologic impact of a every individual To improve efficiency and therefore allow special urban treats: common facilities, community spaces, hobby rooms, ...

**+ More friends
+ Bigger family
- Less landgrab
- Less traffic**



Rows can do it all

The row houses with a depth of 12-18 meter can do it all. Pilarstructure or Schottenbauweise are an easy long lasting and flexible structure that can house any urban activity including various housing types, offices, retails, prodctunns, social institutions, ...

City nature as a resort of ecodiversity

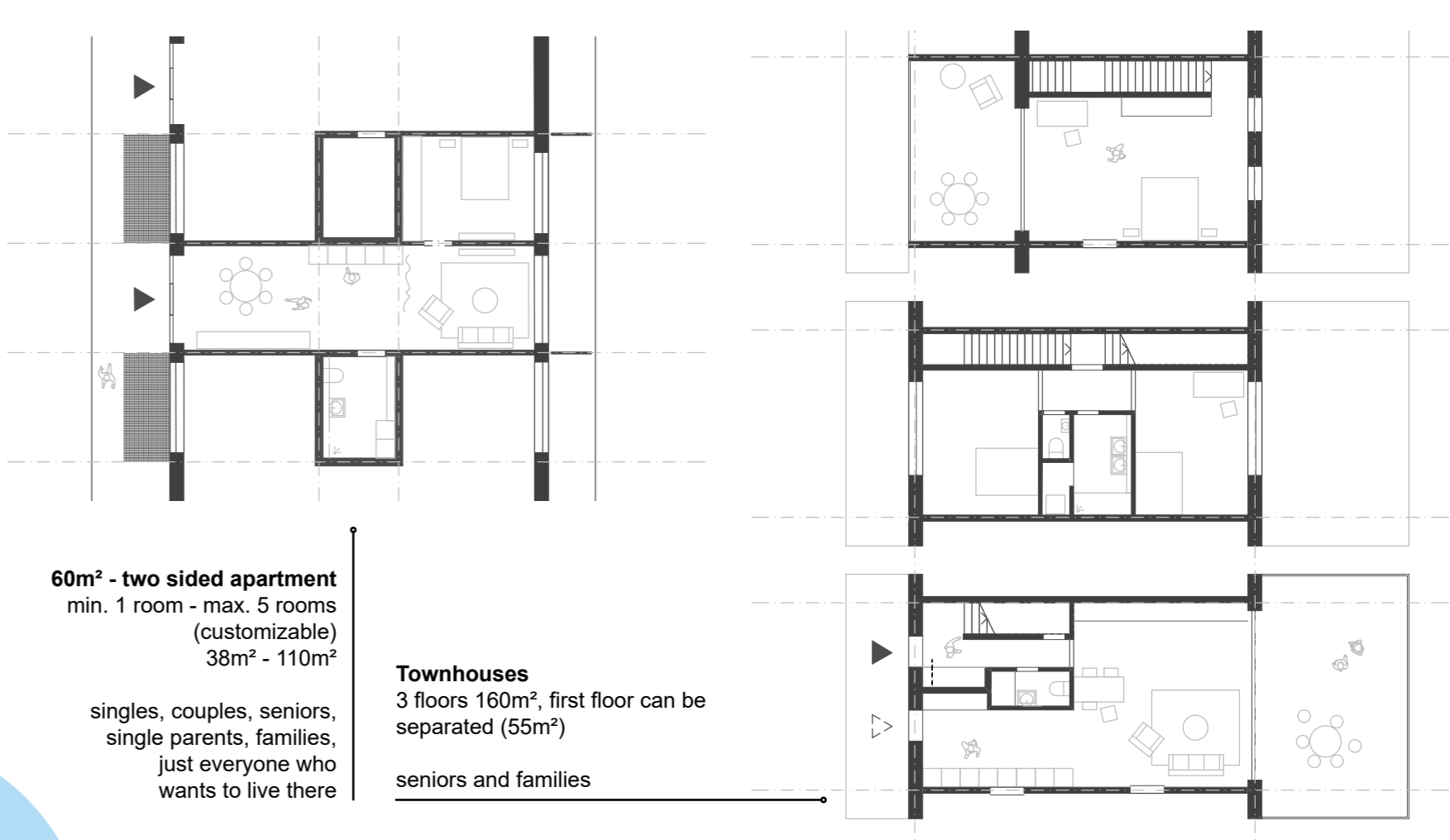
Biodiversity-focused architecture is crucial for sustainable communities. Green roofs, vertical gardens, and habitats within urban structures enrich local ecosystems. Native vegetation supports pollinators and ecological processes, fostering a strong human-nature connection. This approach creates harmonious urban environments where people and wildlife thrive together.

circular spaces Hardware + Software

Following the ideas of a constructive and urban Cradle2Cradle, a robust structural grid will allow future adaptation and easy social reorganisation. A neutral structural hardware will allow the installation of various urban activities by the means of constructive software (Ausbau).

Wood, clay, straw are CO2 saving, locally sourced materials that will create a healthy living environment and local expertise and involvement. Shading, Ventilation, A sponge building, good thermal performance and efficient technical infrastructure will reduce the impact during usage.

CO2



Typical floor plan new 1:500

Exemplary floorplan 1:200

Exemplary floorplan existing building 1:500