

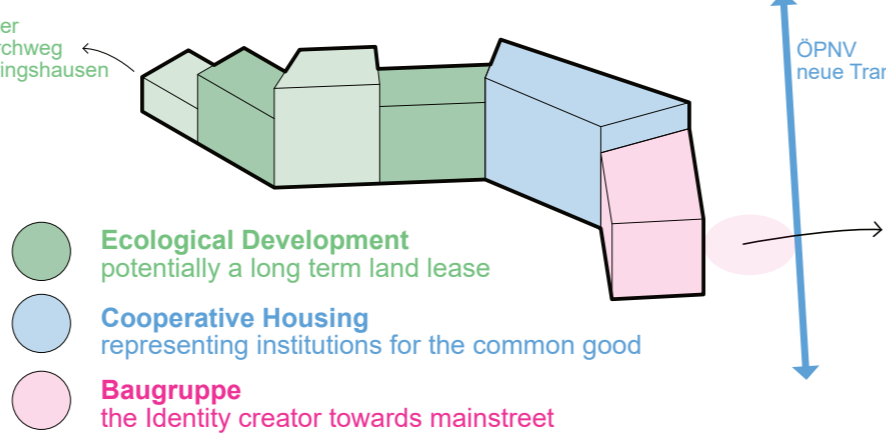
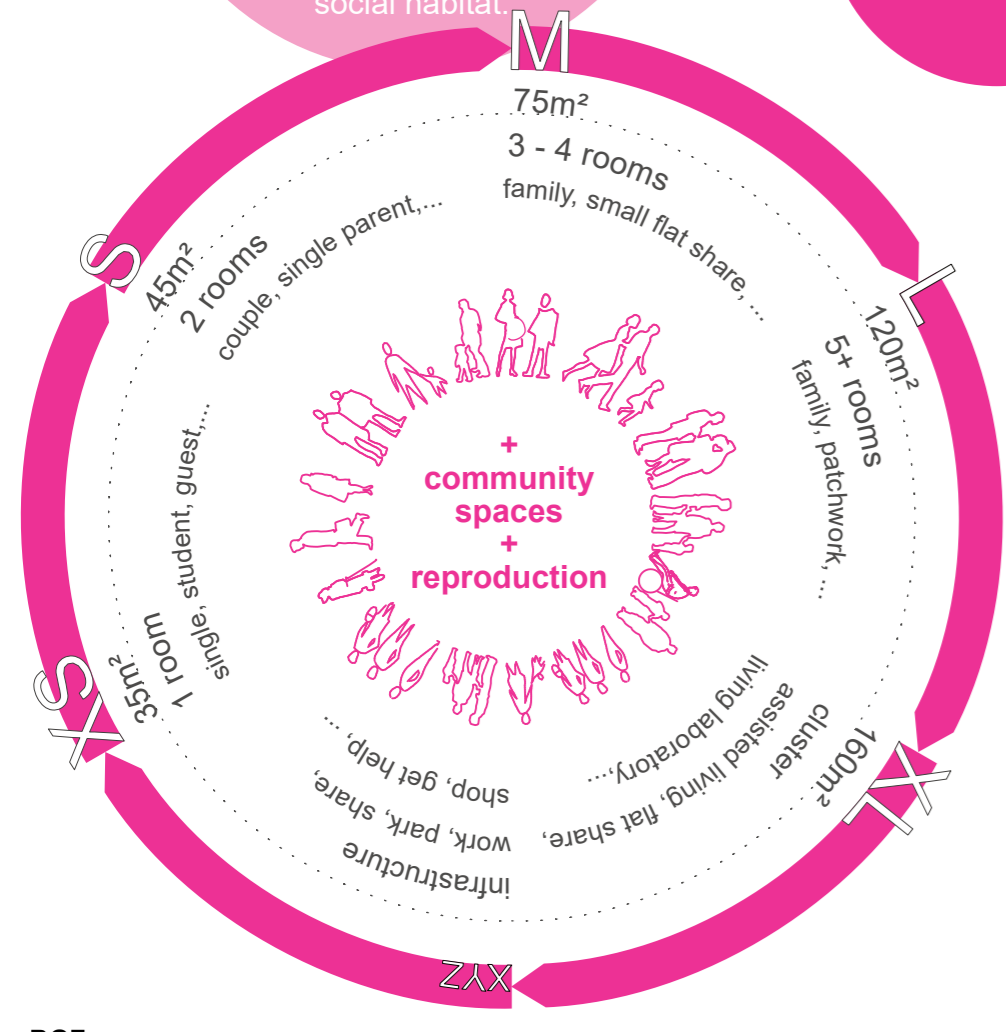
# OV205 KASSEL (DE)

**Dwelling mix**

Women are not "completed" living with a man starting a family. Women live in very different social setups during their life. Same with all other genders. A wide mix of different dwelling types in direct proximity can adapt to changing lifestyle without forcing people to leave their neighbourhood, peers, social habitat.

**Independency**

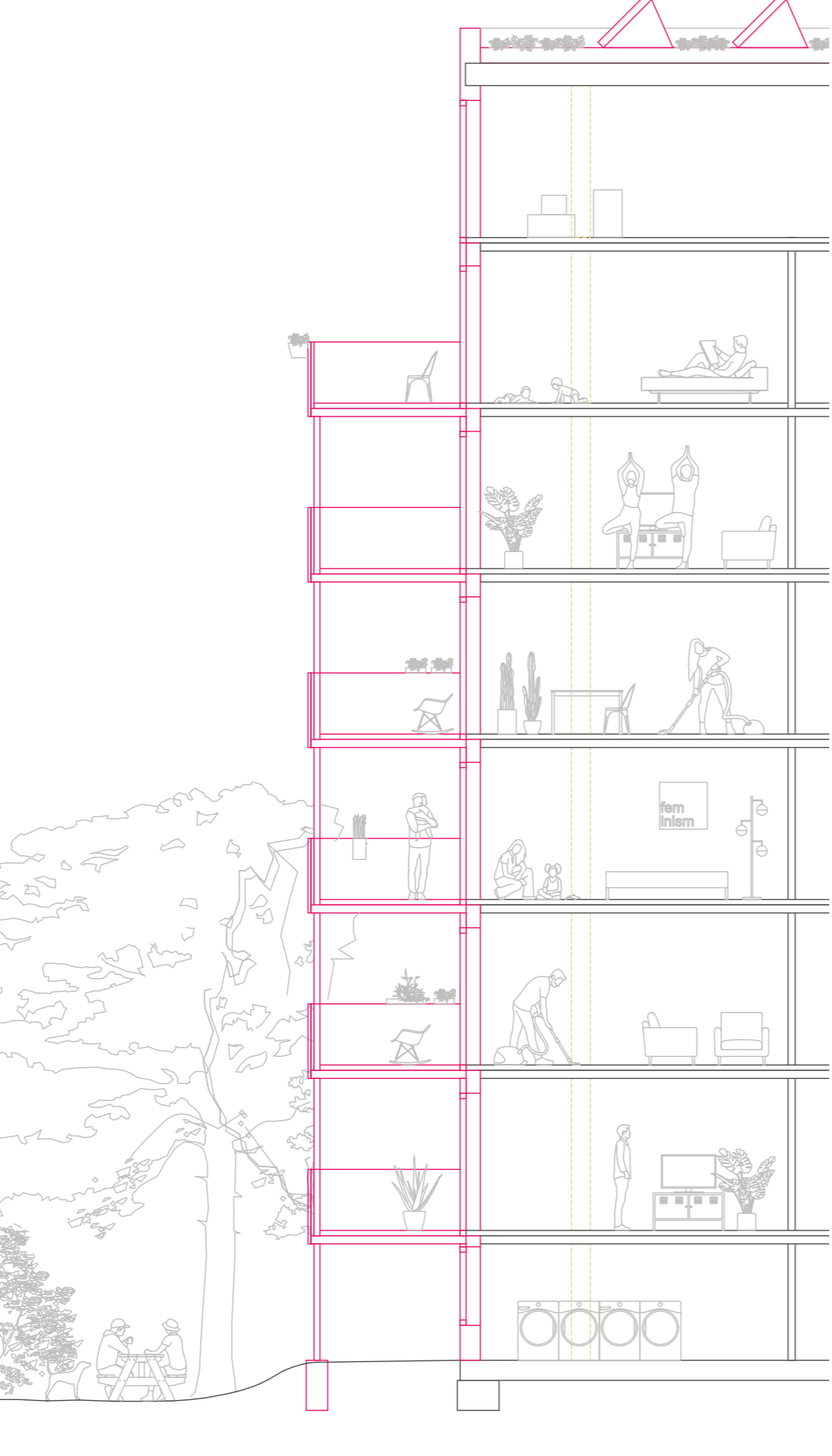
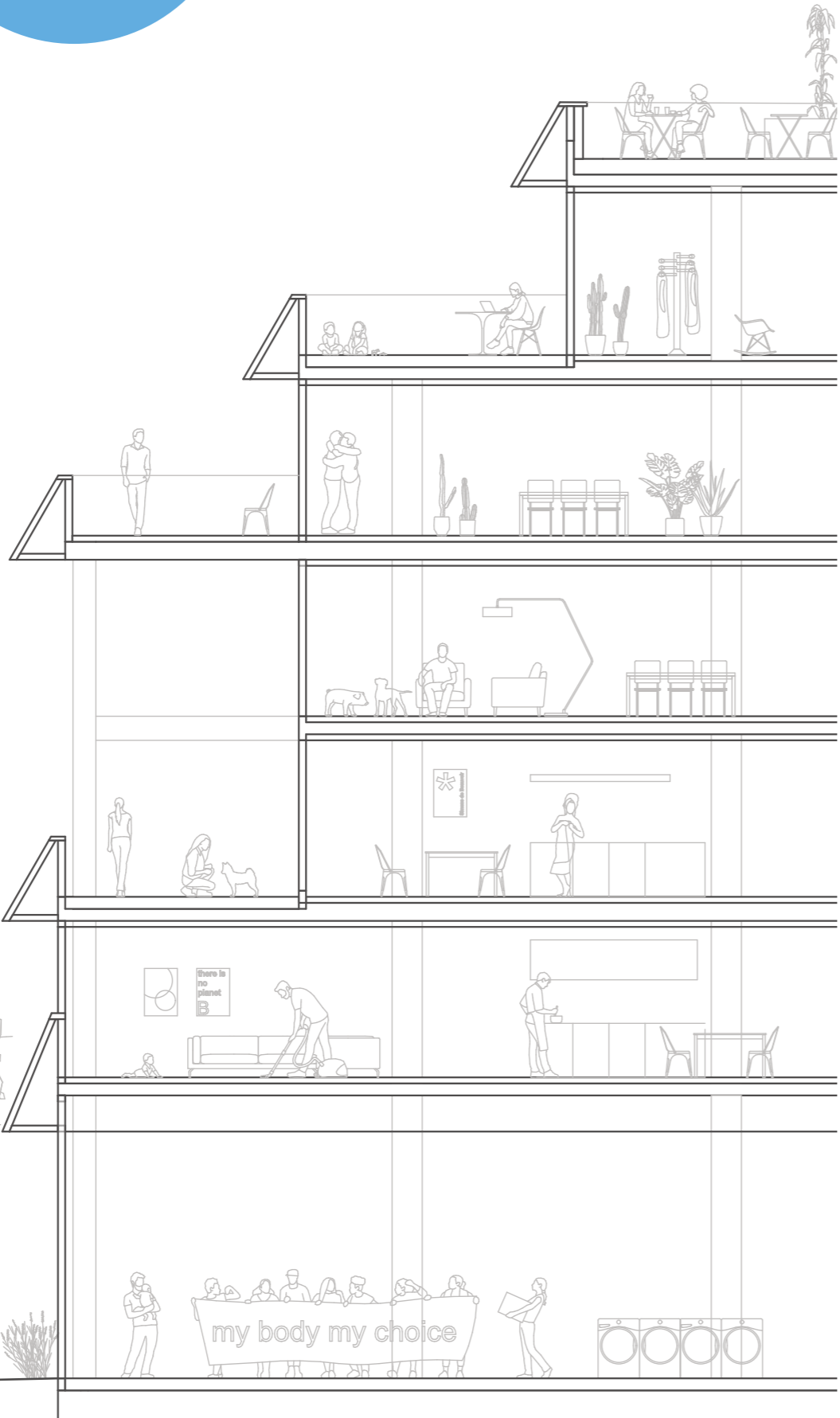
Economic emancipation, through homeownership or housing cooperatives, fosters women's financial independence, autonomy, and empowerment, challenging traditional gender roles. It provides stability and a platform for active participation, advancing feminist goals of gender equality and empowerment in society.



**Owner ship mix**

Housing cooperatives are vital for democratizing economic urbanism by enabling collective ownership and decision-making, fostering community and equitable access to affordable housing and resources. This inclusive approach challenges traditional top-down urban development and empowers residents to shape their neighborhoods and urban environment.

**Baugruppen - the social incubator of every housing row**



**BGF** 53.000m² (including 12.500m² of commerce and community)  
**Housing Units** 612 units (35m² - 150m²)

- Active Roofs** as a socio ecologic incubator
- Greenery + Water retention** help the micro climate and biodiversity
- Workingrooms** for Work life Balance and family work compatibility
- Shading + Ventilation** for solar heat in winter and a fresh breeze in summer
- Plants, Birds, Insects** buildings as a habitat for humans and non human living beings
- Wood, clay, straw** co2 neutral locally sourced materials will create a healthy living environment and local expertise and involvement
- Functional and typological Diversity** will connect neighbours and improve individual and social resilience
- Cradle 2 Cradle Construction** will allow future adaptation and value retention of building material
- Geothermal Response test** can we use Geothermie here? Let's find out.
- No Basement** Minimal concrete use improves the CO2 footprint
- Earth** The full body of earth is membrane, a habitat full of life an our intrusion shall be minimally invasive
- PV** On roof and facades to become carbon neutral (Goal Kassel Klimaschutzstrategie 2030)
- Green Roof** to enhance biodiversity, improve the micro climate and create a sponge city
- Attic Extension / Coverion:** penthouse + community space with a view
- Facade Upgrade:** A thermal c2c facade will reduce heating and cooling, C2c construction will allow futher adaption and material reuse.
- Nice Opening:** no more window balustrates but french windows for illuminated appartments
- New Balconies:** The current balconies will become Interior space, a new layer of outside balconies will allow intensive usage and greenification
- Active Groundfloors + Joint care work** will connect neighbours of any gender and improve individual and social resilience
- Socio ecological landscapes** A more active landscape will merge flora, fauna and local communities and form a sociecological incubator

## Socio - Ecologic Incubation

**Let's talk** Info points and workshops, feminist city tours to educate and understand inhabitants + stakeholders

**Mapping Flora + Fauna** w/ NaBU + Uni Kassel: M.sc. Agriculture, Ecology + Societies, M.sc. Biologie, M.sc. Landschaftsarchitektur, M.sc. Ökolog. Landwirtschaft, M.a. Philosophie Umwelt Gesellschaft

**We own, we manage** Concept for Property, Design, Usage and Upkeeping to enhance user-centric, intersectional and inclusive Building and public space Development

**Focal points** Definition of areas for social and ecologic focal points and corridors

**BewohnerInnenrat** autonomous exchange platform for local stakeholders

**Budget allocation** by the city + private developers to finance a bottom up planning processes Defining principles of public usage for urban contract

**Curation of Green Axis** as social ecologic incubator to produce and productive and reproductive ecosystem

**Foundation Neighbourhood Club** Transfer of property rights to a self governed neighbourhood club for self management or lease i.e. to Uni Kassel

**Active Landscaping** for social, ecologic landscapes and natural reservoirs.

**What a wonderful prospect for Wolfsanger/ Hasenhecke!**

**Live on** The neighbourhood club in its essential being is driven not by us but by its members and can then work, decide, adapt according to its democratic set up. Farewell.

**Constant Adaptation** according to a changing anthropocenic world and climate



**Bestandsaufnahme** social, ecological, structural and juristic analysis of the Status Quo  
**Best practice analysis** of architectural and urban projects.

**Urban Plan** Development of urban design w/ old and new local stakeholders  
**Defining Use and Ownership** Mix w/ a "very" big % of cooperative housing + intersectional integrative structures

**New perspectives** Definition of opportunities, threats and common goals

**Urban Execution** Bauleitplanung + Städtebauliche Verträge

**Long term concept** for conversion and restoration while in use or when tenants move to new development

**Remodelling** according to Cradle 2 Cradle in the constructive, ecologic and social realm

**Sukzessive Anhandgabe** Baugruppen first, as a social incubator

**Each Row** as an individual architectural project

**The wind of change** Following the idea of Cradle 2 Cradle, future adaptation will happen easily according to social, ecological, constructive and economic demands.

## New Development Existing Buildings

**City of happy men\* and women\***

"I know guys, you are afraid of Terfs. No worries, the feminist city doesn't hurt. It's good for us all."  
"The feminist city is an ongoing experiment, of how we can live together in a better and more just urban world. [...] in this city, the full extent of what women have to offer the world can be realized."  
[Leslie Kern]



Section New Construction 1:100

Section Modification 1:100

**Sponge city**

Developing sponge cities is crucial for addressing flood risks, droughts, and urban water management. They absorb, store, and reuse rainwater, reducing strain on drainage systems and mitigating extreme weather impacts. Incorporating permeable surfaces, green spaces, and water retention features helps prevent flooding, recharge groundwater, and enhance water quality, promoting urban resilience and effective water resource management.