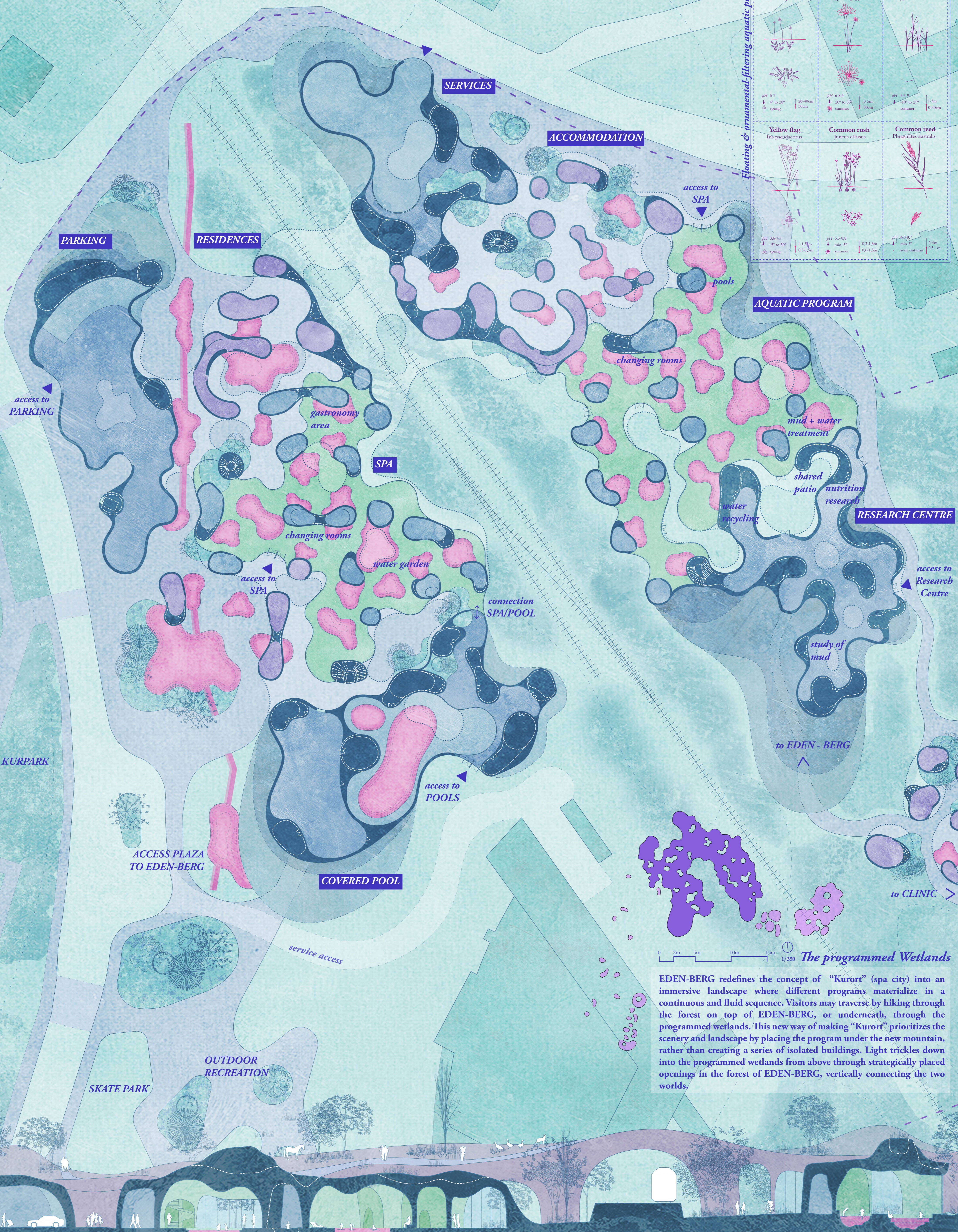


Floating & ornamental-filtering aquatic plants

<p>Featherfoil <i>Hottonia pedunculata</i></p>  <p>pH 5-7 5° to 20° spring</p>	<p>Papyrus <i>Cyperus papyrus</i></p>  <p>pH 6-8.5 20° to 33° summer</p>	<p>Bulrush <i>Typha latifolia</i></p>  <p>pH 5.5-9 10° to 25° summer</p>
<p>Yellow flag <i>Iris pseudacorus</i></p>  <p>pH 3.6-7.7 5° to 20° spring</p>	<p>Common rush <i>Juncus effusus</i></p>  <p>pH 5.5-8.8 min. 3° summer</p>	<p>Common reed <i>Phragmites australis</i></p>  <p>pH 4.8-8.7 min. 3° sum., autumn</p>



0 2m 5m 10m 15m 1/350 *The programmed Wetlands*

EDEN-BERG redefines the concept of "Kurort" (spa city) into an immersive landscape where different programs materialize in a continuous and fluid sequence. Visitors may traverse by hiking through the forest on top of EDEN-BERG, or underneath, through the programmed wetlands. This new way of making "Kurort" prioritizes the scenery and landscape by placing the program under the new mountain, rather than creating a series of isolated buildings. Light trickles down into the programmed wetlands from above through strategically placed openings in the forest of EDEN-BERG, vertically connecting the two worlds.

0 2m 5m 10m 1/200 *SPA and Research Centre*